

RATES « APNIC46 » 2018: CODE « APNIC462018 »

booking : commercial@glphotels.nc & sc@glphotels.nc



LOCATION

Located on Anse Vata Bay, the main tourist area of Noumea, and in proximity to numerous shops and services, this residence features fully equipped apartments.

ACCOMMODATION

120 spacious apartments ranging from studios to three-bedroom apartments (from 45m2 to 110m2) offering comfort and autonomy with quality self-catering facilities.



- Fridge
- Ceramic stove top
- Dishwasher
- Washing machine/dryer
- Oven
- Microwave oven
- Toaster
- Electric coffee maker
- Electric jug

- Satellite TV
- TV in each bedroom
- Iron and ironing board
- Hairdryer
- Individual in room safe

Undercover secure parking

The best view in Noumea from your private balcony overlooking the lagoon

1 bedroom apartment 1 or 2 people	2 bedroom apartment 2 or 4 people	3 bedroom apartment 3 or 6 people	Buffet breakfast
18 600CFP	24 900CFP	28 200CFP	2 800CFP



*Rate/night tax included

RATES « APNIC 46 » 2018 : CODE « APNIC462018 »

booking : commercial@glphotels.nc & sc@glphotels.nc



LOCATION

Located on Anse Vata, the lively beachfront popular with tourists, Nouvata offers a choice of hotel rooms ranging from budget to standard to comfort to premium, with the option of ocean view for each of these categories.

ACCOMMODATION

The many facilities and amenities included in the different room categories are certain to correspond to the expectations of all our guests whether on family, leisure or business travel. An internet connection with limited navigation and email access is complimentary for all guests and pre-pay options for high speed data are available for purchase at reception.

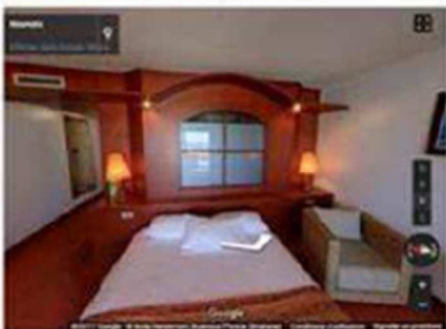


SERVICES

Various hotel services are also available, including a hairdressing salon, beauty and massage center, pharmacy and stand up paddle hire.

Nouvata is located 45 minutes from Tontouta International Airport and 10kms from Magenta Domestic Airport. Airport transfers can be organised on request.

	STANDARD ROOM Sea View* & Garden View* Subject to availability 25 m ²	CONFORT ROOM Sea View & Garden View Subject to availability 32 m ²	PREMIUM ROOM Sea View & Garden View Subject to availability 48 m ²	BUDGET *ROOM FOR JUST 1 PERSON
1 or 2 people	9 500 CFP*	10 600 CFP*	11 600 CFP*	8 200 CFP* Garden view 12 m ²
3 people			14 400 CFP*	9 100 CFP* Sea view 12 m ²
4 people			19 200 CFP*	*Budget Room for just 1 person
BUFFET AMERICAN BREAKFAST	Hot beverage, fruit juice, Danish pastries, toasts, jam, butter, fruit salade, ham, cheese, crudités, yoghurts, scrambled or fried eggs, omelet and poached eggs on request. : 2 800 CFP			
ESPRESSO BREAKFAST	1 hot beverage, 1 fruit juice, 1 danish pastry, sliced bread, bread, butter, jam. : 1 900 CFP			



*Rate/night tax included

FOOD & BEVERAGES

« APNIC 46 » 2018 : CODE « APNIC462018 »

Booking : commercial@glphotels.nc & sc@glphotels.nc



RESTAURANT

To satisfy your taste buds, the hotel restaurant « L'équilibre » features market fresh buffets for breakfast, lunch and dinner in an idyllic location. Choose between a sea view or vista of the swimming pool and tropical gardens to compliment your dining experience.

Every Friday evening, the gardens and pool become the perfect backdrop for a sumptuous seafood buffet and spectacular Tahitian dance show.

A culinary voyage via different themed buffets is available every Saturday evening.



	Starters and dessert Buffet plus grill Full buffet : 4 500CFP – 3 dish	Starters and dessert Buffet 3 300CFP – 2 dish
LUNCH/DINNER from 11.30 am to 14pm the lunch and from 18.30pm to 21.30 evening, except Friday evening*	Formula to Monday at Sunday (except Friday evening): <i>Sushis, starters, selection of salads, savoury tasts, choice of one grill, main courses & dessert.</i>	Formula to Monday at Sunday (except Friday evening): <i>Selection of salads, sushis, starters, savoury tarts & desserts.</i>
*DINNER NOUVATA NUI BUFFET * Friday evening	8 000CFP to 19h – 23h30 just Friday*evening: Seafood buffet, selection of starters, main courses & desserts. Polynesian Dance show with the “Te Ana Vai” dancers.	

GENERAL SALES CONDITIONS OF LODGEMENT

ARRIVAL AND DEPARTURE TIMES

The arrival time is set at 2pm (with the exception of HILTON NOUMEA LA PROMENADE RESIDENCES: 3pm) and departure is at 11am for all our hotels.

Outside these hours, early arrivals and late departures maybe granted based on availability of the Rooms/Bungalows.

- For arrivals between 9am and 2pm or departures between 11am and 2pm : 50% of rate charged will be billed.

- For departures after 2pm or arrivals before 9am in the morning, a full night rate will be billed.

CANCELLATION CONDITIONS (NOT INCLUDING GROUPS)

Please immediately advise the hotel of any cancellations. If neglected, a penalty fee may be applied

The applicable conditions for cancellation are as follow:

- Cancellation received at least 7 days prior to arrival date: no penalties,
- Cancellation received less than 7 days prior to arrival date: 1 full night rate will be billed,
- In the case of no show: 2 nights will be charged,

Proof of cancellation request is based on date of receipt of letter, fax or e-mail. Please note that for late arrival greater than 24hours, hotel management reserves the right to re-book the room. There will not be any reimbursement for early departure.

RESERVATIONS

For bookings paid by the business company/entity, a confirmation of the booking reservation must be made by fax or e-mail by that company. Credit card details are required on guests' arrival as a form of guarantee (even if the business company is charged for the entire guest stay).

TAXES

In the event the decision is made by the Government of New Caledonia to adjust room tax, hotel management reserves

The right to modify the rates in consequence. Tax on Services (T.S.S.) at 5 % is included in breakfasts and meals prices.

However, should the Government of New Caledonia decides to amend this tax rate, hotel management reserves the right to modify our rates in consequence.

In the event the decision is made by the Government of New Caledonia to implement VAT, hotel management reserves

The right to review current rates as well as those referenced in this document.

CHANGES TO RESERVATION

All changes to an initial booking (number of persons, number of nights, dates...) must be requested in writing by the guest, and followed by a written confirmation of the changes by the hotel.

GENERAL CONDITIONS

Rates are expressed in Pacific Francs. These rates are not applicable on the following holidays, Valentine's Day weekend and December 31. The rates are applicable from January 1, 2017 to December 30, 2017. For booking reservations overlapping one year to another, please apply the applicable rates for each of the periods. Rates are based on single or double room for individual bookings. For groups or long stays, please contact us. All rates are subject to change without notice. These rates are strictly confidential and shall not be disclosed to third parties.

For Corporate Business Company in charge of payments for employees stays, payment must be provided at time of booking, otherwise stays will be billed directly to the occupant of the room. Full payment of the bill must be made within one month from the period of stay of the guests.

In case of delay in payment, the hotel reserves the right to add 1.5% interest per month on the total invoice amount. Systematic late payment may lead to the suspension of credit and a request for prepayment of benefits. For bookings made outside Noumea, a prepayment of the total stay is requested upon booking.