

BGP Multihoming Techniques



Philip Smith

<philip@apnic.net>

APRICOT 2013

Singapore

19th February – 1st March 2013

Presentation Slides

- Will be available on
 - <http://thyme.apnic.net/ftp/seminars/APRICOT2013-Multihoming.pdf>
 - And on the APRICOT2013 website
- Feel free to ask questions any time

Preliminaries

- Tutorial has many configuration examples
 - Uses Cisco IOS CLI
- Aimed at Service Providers
 - Techniques can be used by many enterprises too



BGP Multihoming Techniques

- **Why Multihome?**
- Definition & Options
- How to Multihome
- Principles & Addressing
- Basic Multihoming
- Service Provider Multihoming
- Using Communities

Why Multihome?



It's all about redundancy,
diversity & reliability

Why Multihome?

□ Redundancy

- One connection to internet means the network is dependent on:
 - Local router (configuration, software, hardware)
 - WAN media (physical failure, carrier failure)
 - Upstream Service Provider (configuration, software, hardware)

Why Multihome?

□ Reliability

- Business critical applications demand continuous availability
- Lack of redundancy implies lack of reliability implies loss of revenue

Why Multihome?

□ Supplier Diversity

- Many businesses demand supplier diversity as a matter of course
- Internet connection from two or more suppliers
 - With two or more diverse WAN paths
 - With two or more exit points
 - With two or more international connections
 - **Two of everything**

Why Multihome?

- Not really a reason, but oft quoted...
- Leverage:
 - Playing one ISP off against the other for:
 - Service Quality
 - Service Offerings
 - Availability

Why Multihome?

□ Summary:

- Multihoming is easy to demand as requirement for any service provider or end-site network
- But what does it really mean:
 - In real life?
 - For the network?
 - For the Internet?
- And how do we do it?



BGP Multihoming Techniques

- Why Multihome?
- **Definition & Options**
- How to Multihome
- Principles & Addressing
- Basic Multihoming
- Service Provider Multihoming
- Using Communities

Multihoming: Definitions & Options



What does it mean, what do we need, and how do we do it?

Multihoming Definition

- More than one link external to the local network
 - two or more links to the same ISP
 - two or more links to different ISPs
- Usually **two** external facing routers
 - one router gives link and provider redundancy only

Autonomous System Number (ASN)

- Two ranges
 - 0-65535 (original 16-bit range)
 - 65536-4294967295 (32-bit range – RFC4893)
- Usage:
 - 0 and 65535 (reserved)
 - 1-64495 (public Internet)
 - 64496-64511 (documentation – RFC5398)
 - 64512-65534 (private use only)
 - 23456 (represent 32-bit range in 16-bit world)
 - 65536-65551 (documentation – RFC5398)
 - 65552-4294967295 (public Internet)
- 32-bit range representation specified in RFC5396
 - Defines “asplain” (traditional format) as standard notation

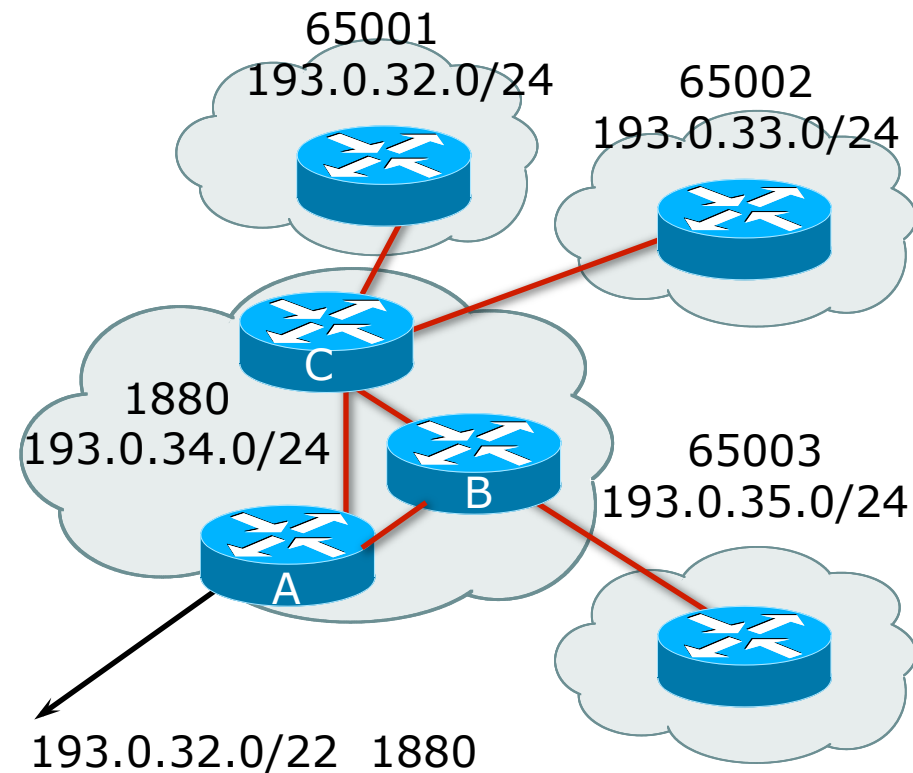
Autonomous System Number (ASN)

- ASNs are distributed by the Regional Internet Registries
 - They are also available from upstream ISPs who are members of one of the RIRs
 - Around 43000 are visible on the Internet
- Current 16-bit ASN allocations up to 61439 have been made to the RIRs
- Each RIR has also received a block of 32-bit ASNs
 - Out of 3700 assignments, around 3300 are visible on the Internet
- See www.iana.org/assignments/as-numbers

Private-AS – Application

□ Applications

- An ISP with customers multihomed on their backbone (RFC2270)
-or-
- A corporate network with several regions but connections to the Internet only in the core
-or-
- Within a BGP Confederation



Private-AS – Removal

- Private ASNs MUST be removed from all prefixes announced to the public Internet
 - Include configuration to remove private ASNs in the eBGP template
- As with RFC1918 address space, private ASNs are intended for internal use
 - They should not be leaked to the public Internet
- Cisco IOS

```
neighbor x.x.x.x remove-private-AS
```

Transit/Peering/Default

□ Transit

- Carrying traffic across a network
- Usually **for a fee**

□ Peering

- Exchanging locally sourced routing information and traffic
- Usually **for no fee**
- Sometimes called settlement free peering

□ Default

- Where to send traffic when there is no explicit match in the routing table

Configuring Policy

- Three BASIC Principles for IOS configuration examples throughout presentation:
 - **prefix-lists** to filter **prefixes**
 - **filter-lists** to filter **ASNs**
 - **route-maps** to apply **policy**
- Route-maps can be used for filtering, but this is more “advanced” configuration

Policy Tools

- Local preference
 - outbound traffic flows
- Metric (MED)
 - inbound traffic flows (local scope)
- AS-PATH prepend
 - inbound traffic flows (Internet scope)
- Communities
 - specific inter-provider peering

Originating Prefixes: Assumptions

- ❑ **MUST** announce assigned address block to Internet
- ❑ MAY also announce subprefixes – reachability is not guaranteed
- ❑ Current minimum allocation is from /20 to /24 depending on the RIR
 - Several ISPs filter RIR blocks on this boundary
 - Several ISPs filter the rest of address space according to the IANA assignments
 - This activity is called “Net Police” by some

Originating Prefixes

- The RIRs publish their minimum allocation sizes per /8 address block
 - AfriNIC: www.afrinic.net/docs/policies/afpol-v4200407-000.htm
 - APNIC: www.apnic.net/db/min-alloc.html
 - ARIN: www.arin.net/reference/ip_blocks.html
 - LACNIC: lacnic.net/en/registro/index.html
 - RIPE NCC: www.ripe.net/ripe/docs/smallest-alloc-sizes.html
 - Note that AfriNIC only publishes its current minimum allocation size, not the allocation size for its address blocks
- IANA publishes the address space it has assigned to end-sites and allocated to the RIRs:
 - www.iana.org/assignments/ipv4-address-space
- Several ISPs use this published information to filter prefixes on:
 - What should be routed (from IANA)
 - The minimum allocation size from the RIRs

“Net Police” prefix list issues

- ❑ Meant to “punish” ISPs who pollute the routing table with specifics rather than announcing aggregates
- ❑ Impacts legitimate multihoming especially at the Internet’s edge
- ❑ Impacts regions where domestic backbone is unavailable or costs \$\$\$ compared with international bandwidth
- ❑ Hard to maintain – requires updating when RIRs start allocating from new address blocks
- ❑ Don’t do it unless consequences understood and you are prepared to keep the list current
 - Consider using the Team Cymru or other reputable bogon BGP feed:
 - www.team-cymru.org/Services/Bogons/routeserver.html



BGP Multihoming Techniques

- Why Multihome?
- Definition & Options
- **How to Multihome**
- Principles & Addressing
- Basic Multihoming
- Service Provider Multihoming
- Using Communities

How to Multihome



Choosing between transit and
peer

Transits

- Transit provider is another autonomous system which is used to provide the local network with access to other networks
 - Might be local or regional only
 - But more usually the whole Internet
- Transit providers need to be chosen wisely:
 - Only one
 - no redundancy
 - Too many
 - more difficult to load balance
 - no economy of scale (costs more per Mbps)
 - hard to provide service quality
- **Recommendation: at least two, no more than three**

Common Mistakes

- ❑ ISPs sign up with too many transit providers
 - Lots of small circuits (cost more per Mbps than larger ones)
 - Transit rates per Mbps reduce with increasing transit bandwidth purchased
 - Hard to implement reliable traffic engineering that doesn't need daily fine tuning depending on customer activities
- ❑ No diversity
 - Chosen transit providers all reached over same satellite or same submarine cable
 - Chosen transit providers have poor onward transit and peering

Peers

- A peer is another autonomous system with which the local network has agreed to exchange locally sourced routes and traffic
- Private peer
 - Private link between two providers for the purpose of interconnecting
- Public peer
 - Internet Exchange Point, where providers meet and freely decide who they will interconnect with
- **Recommendation: peer as much as possible!**

Common Mistakes

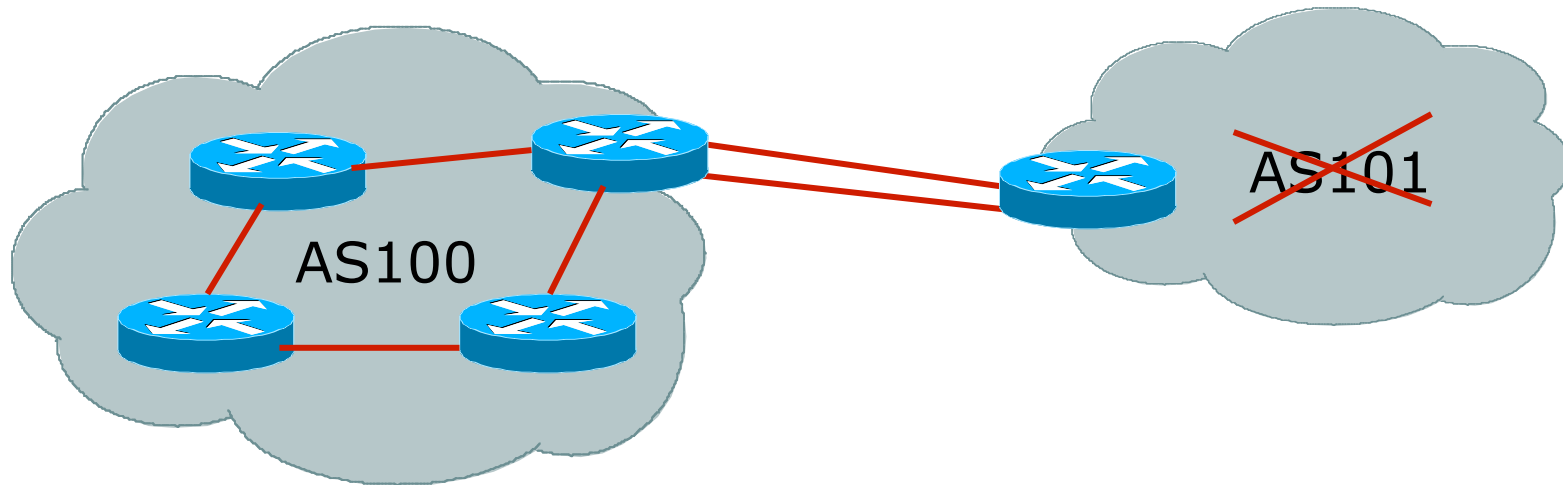
- ❑ Mistaking a transit provider's "Exchange" business for a no-cost public peering point
- ❑ Not working hard to get as much peering as possible
 - Physically near a peering point (IXP) but not present at it
 - (Transit sometimes is cheaper than peering!!)
- ❑ Ignoring/avoiding competitors because they are competition
 - Even though potentially valuable peering partner to give customers a better experience



Multihoming Scenarios

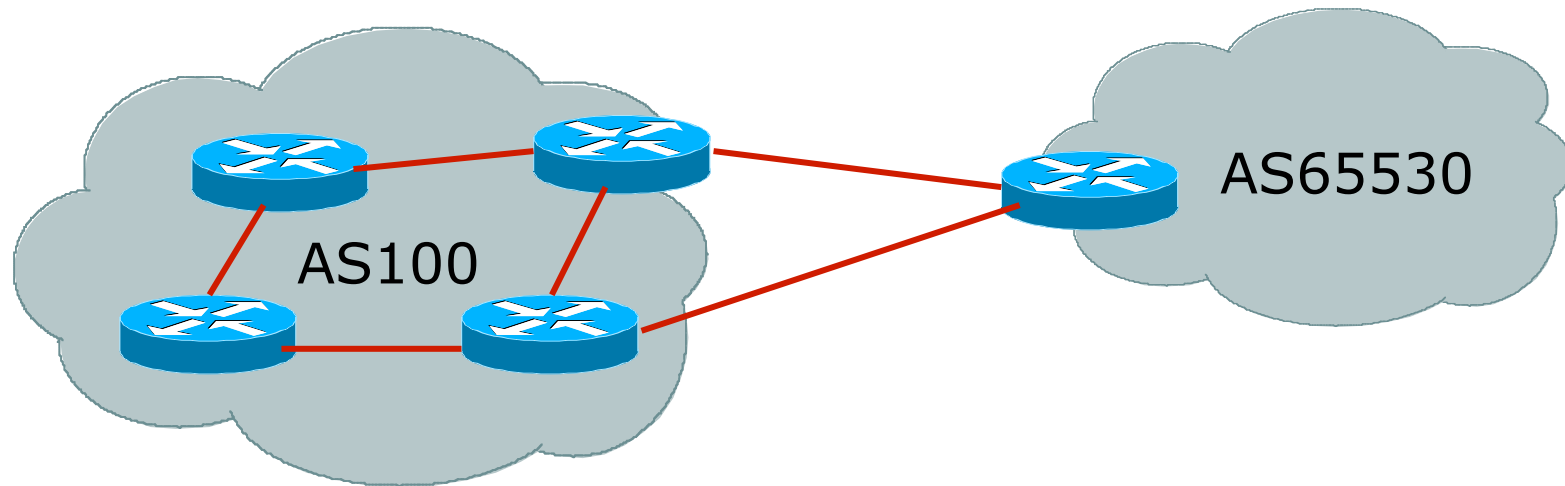
- ❑ Stub network
- ❑ Multi-homed stub network
- ❑ Multi-homed network
- ❑ Multiple sessions to another AS

Stub Network



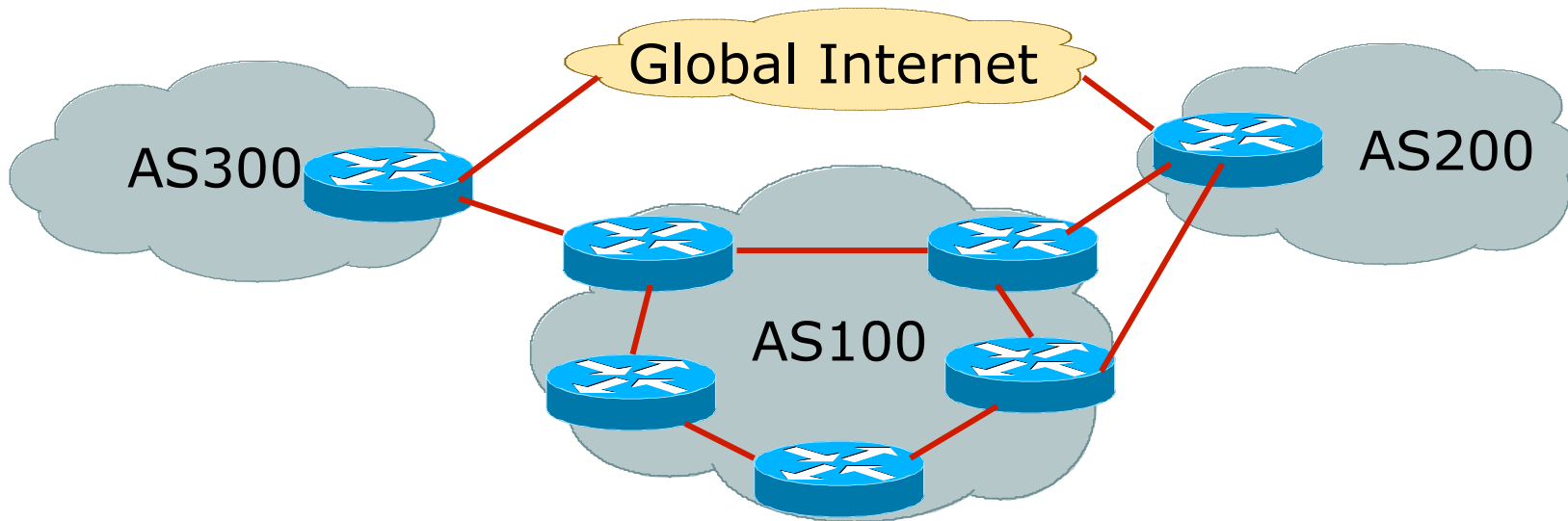
- ❑ No need for BGP
- ❑ Point static default to upstream ISP
- ❑ Upstream ISP advertises stub network
- ❑ Policy confined within upstream ISP' s policy

Multi-homed Stub Network



- ❑ Use BGP (not IGP or static) to loadshare
- ❑ Use private AS (ASN > 64511)
- ❑ Upstream ISP advertises stub network
- ❑ Policy confined within upstream ISP's policy

Multi-homed Network



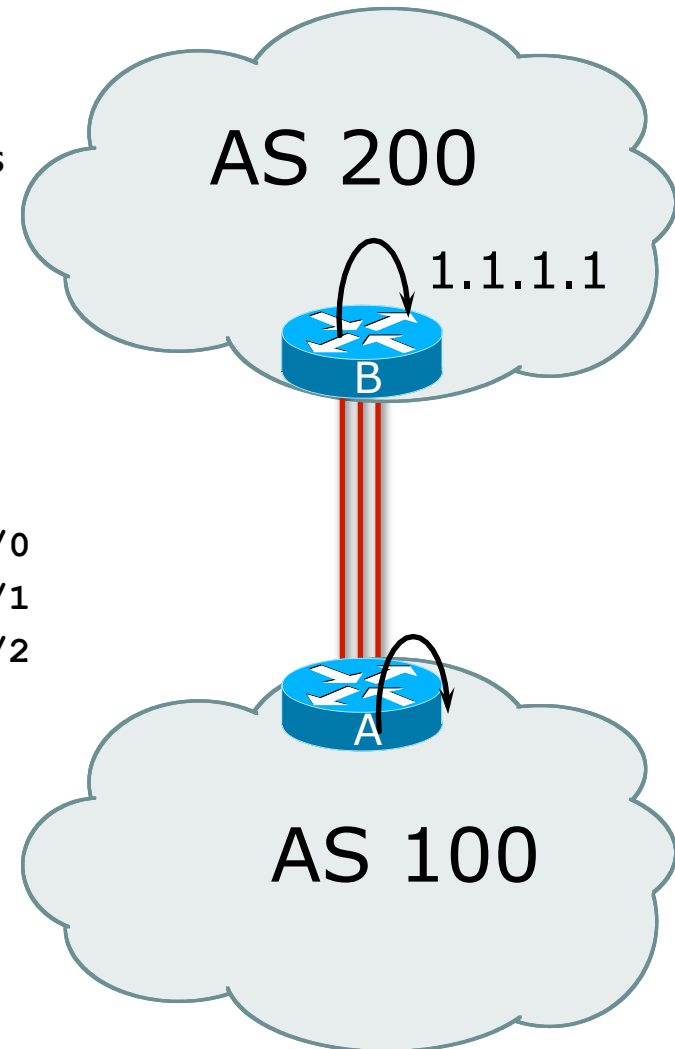
- Many situations possible
 - multiple sessions to same ISP
 - secondary for backup only
 - load-share between primary and secondary
 - selectively use different ISPs

Multiple Sessions to an AS

– ebgp multihop

- ❑ Use ebgp-multihop
 - Run eBGP between loopback addresses
 - eBGP prefixes learned with loopback address as next hop
- ❑ Cisco IOS

```
router bgp 100
  neighbor 1.1.1.1 remote-as 200
  neighbor 1.1.1.1 ebgp-multihop 2
  !
  ip route 1.1.1.1 255.255.255.255 serial 1/0
  ip route 1.1.1.1 255.255.255.255 serial 1/1
  ip route 1.1.1.1 255.255.255.255 serial 1/2
```
- ❑ Common error made is to point remote loopback route at IP address rather than specific link



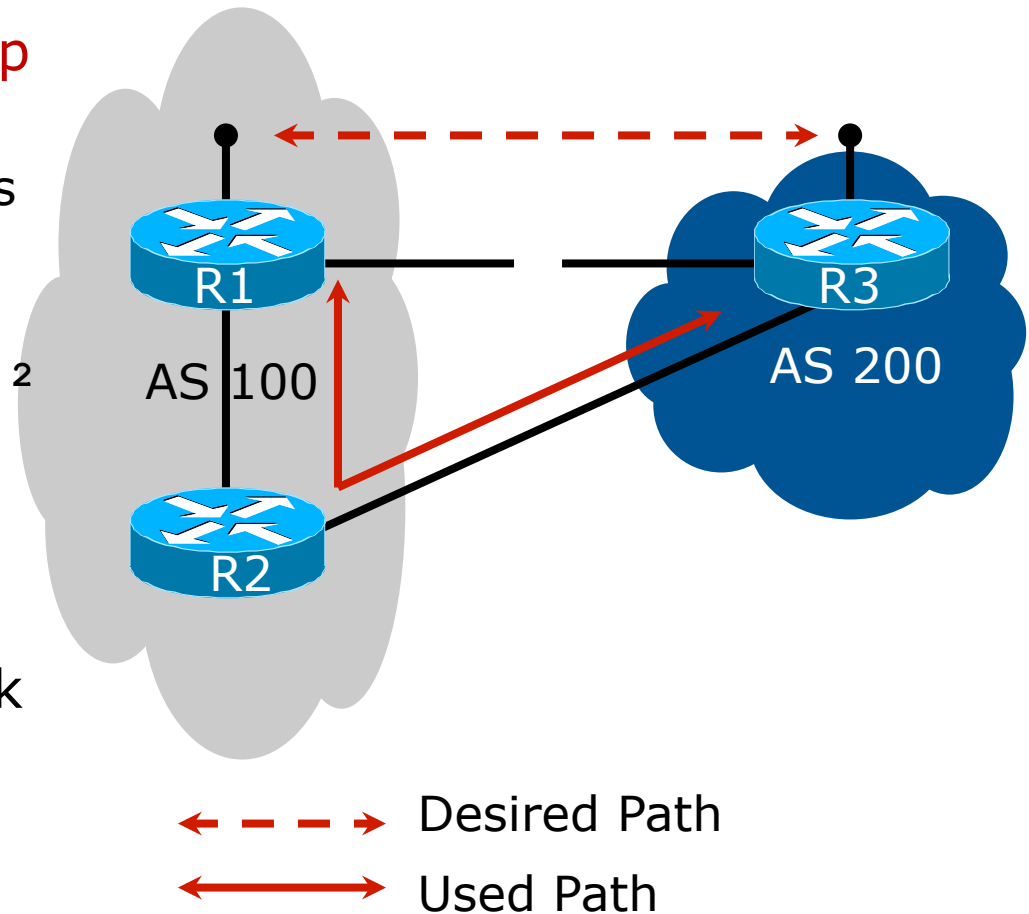
Multiple Sessions to an AS

– ebgp multihop

- ❑ One serious eBGP-multihop caveat:

- R1 and R3 are eBGP peers that are loopback peering
- Configured with:
`neighbor x.x.x.x ebgp-multihop 2`
- If the R1 to R3 link goes down the session could establish via R2

- ❑ Usually happens when routing to remote loopback is dynamic, rather than static pointing at a link



Multiple Sessions to an ISP

– ebgp multihop

- Try and avoid use of ebgp-multihop unless:
 - It's absolutely necessary –or–
 - Loadsharing across multiple links
- Many ISPs discourage its use, for example:

We will run eBGP multihop, but do not support it as a standard offering because customers generally have a hard time managing it due to:

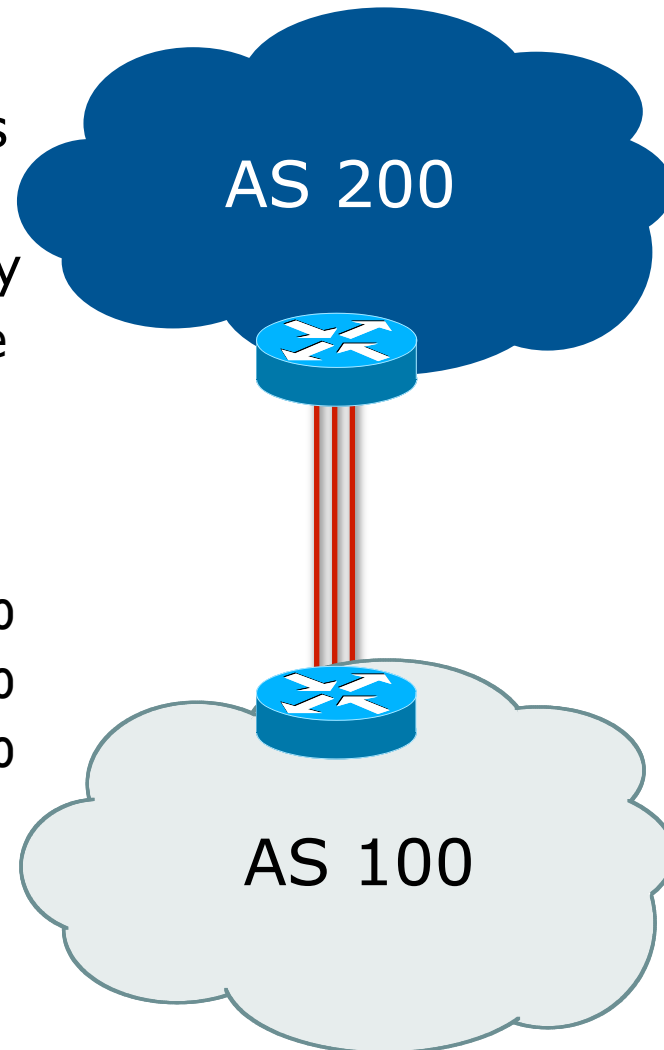
- routing loops
- failure to realise that BGP session stability problems are usually due connectivity problems between their CPE and their BGP speaker

Multiple Sessions to an AS

– bgp multi path

- ❑ Three BGP sessions required
- ❑ Platform limit on number of paths (could be as little as 6)
- ❑ Full BGP feed makes this unwieldy
 - 3 copies of Internet Routing Table goes into the FIB

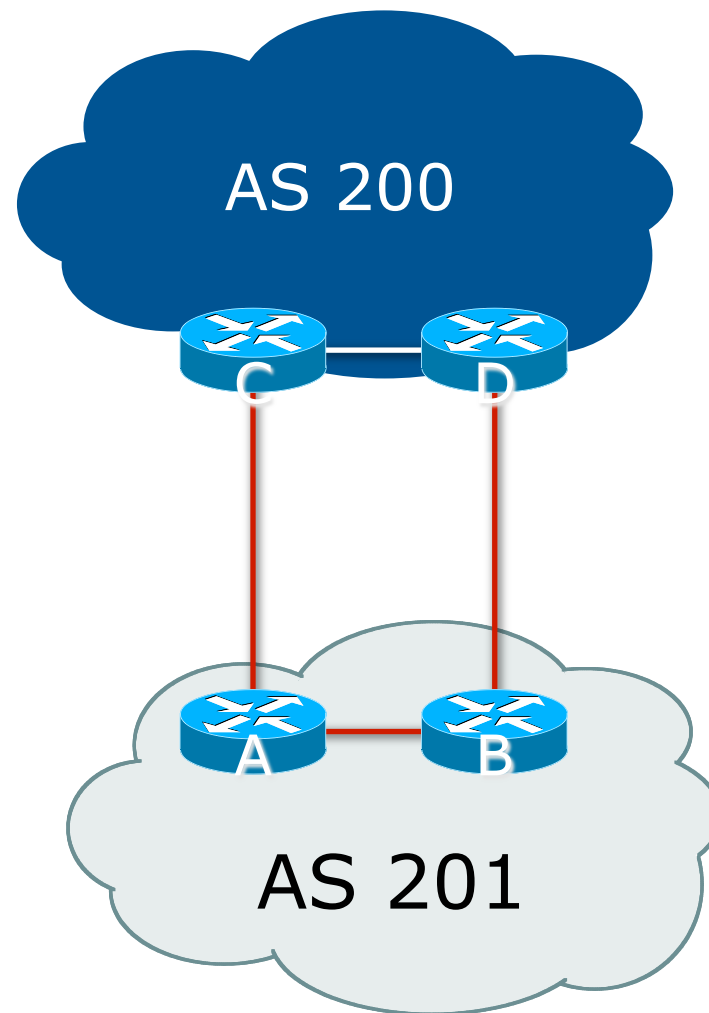
```
router bgp 100
  neighbor 1.1.2.1 remote-as 200
  neighbor 1.1.2.5 remote-as 200
  neighbor 1.1.2.9 remote-as 200
  maximum-paths 3
```



Multiple Sessions to an AS

– bgp attributes & filters

- ❑ Simplest scheme is to use defaults
- ❑ Learn/advertise prefixes for better control
- ❑ Planning and some work required to achieve loadsharing
 - Point default towards one ISP
 - Learn selected prefixes from second ISP
 - Modify the number of prefixes learnt to achieve acceptable load sharing
- ❑ **No magic solution**





BGP Multihoming Techniques

- Why Multihome?
- Definition & Options
- How to Multihome
- Principles & Addressing
- Basic Multihoming
- Service Provider Multihoming
- Using Communities

Basic Principles of Multihoming



Let's learn to walk before we try
running...

The Basic Principles

- Announcing address space attracts traffic
 - (Unless policy in upstream providers interferes)
- Announcing the ISP aggregate out a link will result in traffic for that aggregate coming in that link
- Announcing a subprefix of an aggregate out a link means that all traffic for that subprefix will come in that link, even if the aggregate is announced somewhere else
 - The most specific announcement wins!

The Basic Principles

- To split traffic between two links:
 - Announce the aggregate on both links - ensures redundancy
 - Announce one half of the address space on each link
 - (This is the first step, all things being equal)
- Results in:
 - Traffic for first half of address space comes in first link
 - Traffic for second half of address space comes in second link
 - If either link fails, the fact that the aggregate is announced ensures there is a backup path

The Basic Principles

- The keys to successful multihoming configuration:
 - Keeping traffic engineering prefix announcements independent of customer iBGP
 - Understanding how to announce aggregates
 - Understanding the purpose of announcing subprefixes of aggregates
 - Understanding how to manipulate BGP attributes
 - Too many upstreams/external paths makes multihoming harder (2 or 3 is enough!)

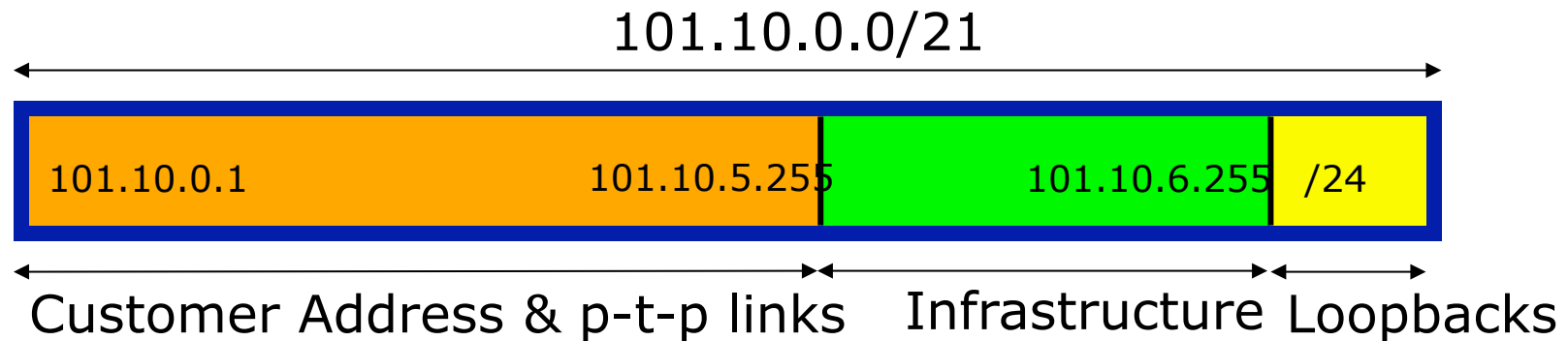
IP Addressing & Multihoming



How Good IP Address Plans
assist with Multihoming

IP Addressing & Multihoming

- ❑ IP Address planning is an important part of Multihoming
- ❑ Previously have discussed separating:
 - Customer address space
 - Customer p-t-p link address space
 - Infrastructure p-t-p link address space
 - Loopback address space

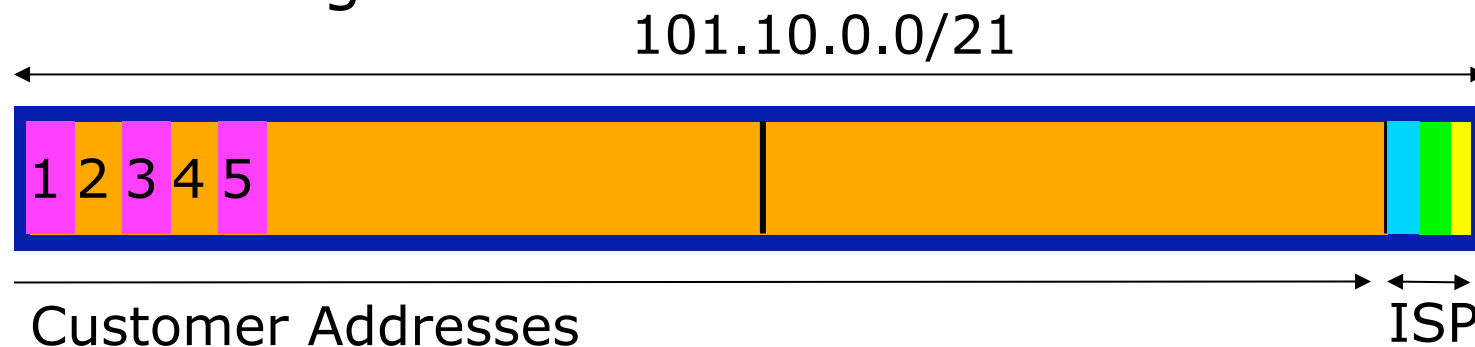


IP Addressing & Multihoming

- ❑ ISP Router loopbacks and backbone point to point links make up a small part of total address space
 - And they don't attract traffic, unlike customer address space
- ❑ Links from ISP Aggregation edge to customer router needs one /30
 - Small requirements compared with total address space
 - Some ISPs use IP unnumbered
- ❑ Planning customer assignments is a very important part of multihoming
 - Traffic engineering involves subdividing aggregate into pieces until load balancing works

Unplanned IP addressing

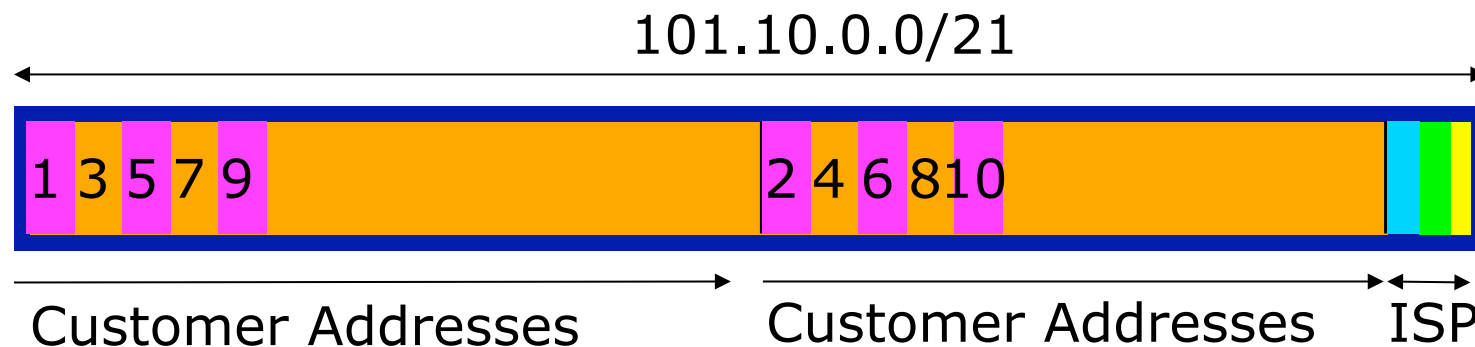
- ISP fills up customer IP addressing from one end of the range:



- Customers generate traffic
 - Dividing the range into two pieces will result in one /22 with all the customers, and one /22 with just the ISP infrastructure the addresses
 - No loadbalancing as all traffic will come in the first /22
 - Means further subdivision of the first /22 = harder work

Planned IP addressing

- If ISP fills up customer addressing from both ends of the range:



- Scheme then is:
 - First customer from first /22, second customer from second /22, third from first /22, etc
- This works also for residential versus commercial customers:
 - Residential from first /22
 - Commercial from second /22

Planned IP Addressing

- ❑ This works fine for multihoming between two upstream links (same or different providers)
- ❑ Can also subdivide address space to suit more than two upstreams
 - Follow a similar scheme for populating each portion of the address space
- ❑ Don't forget to always announce an aggregate out of each link



BGP Multihoming Techniques

- Why Multihome?
- Definition & Options
- How to Multihome
- Principles & Addressing
- **Basic Multihoming**
- Service Provider Multihoming
- Using Communities

Basic Multihoming



Let's try some simple worked examples...

Basic Multihoming

- No frills multihoming
- Will look at two cases:
 - Multihoming with the same ISP
 - Multihoming to different ISPs
- Will keep the examples easy
 - Understanding easy concepts will make the more complex scenarios easier to comprehend
 - All assume that the site multihoming has a /19 address block

Basic Multihoming

- This type is most commonplace at the edge of the Internet
 - Networks here are usually concerned with inbound traffic flows
 - Outbound traffic flows being “nearest exit” is usually sufficient
- Can apply to the leaf ISP as well as Enterprise networks

Basic Multihoming



Multihoming to the Same ISP

Basic Multihoming:

Multihoming to the same ISP

- Use BGP for this type of multihoming
 - use a private AS (ASN > 64511)
 - There is no need or justification for a public ASN
 - Making the nets of the end-site visible gives no useful information to the Internet
- Upstream ISP proxy aggregates
 - in other words, announces only your address block to the Internet from their AS (as would be done if you had one statically routed connection)

Two links to the same ISP

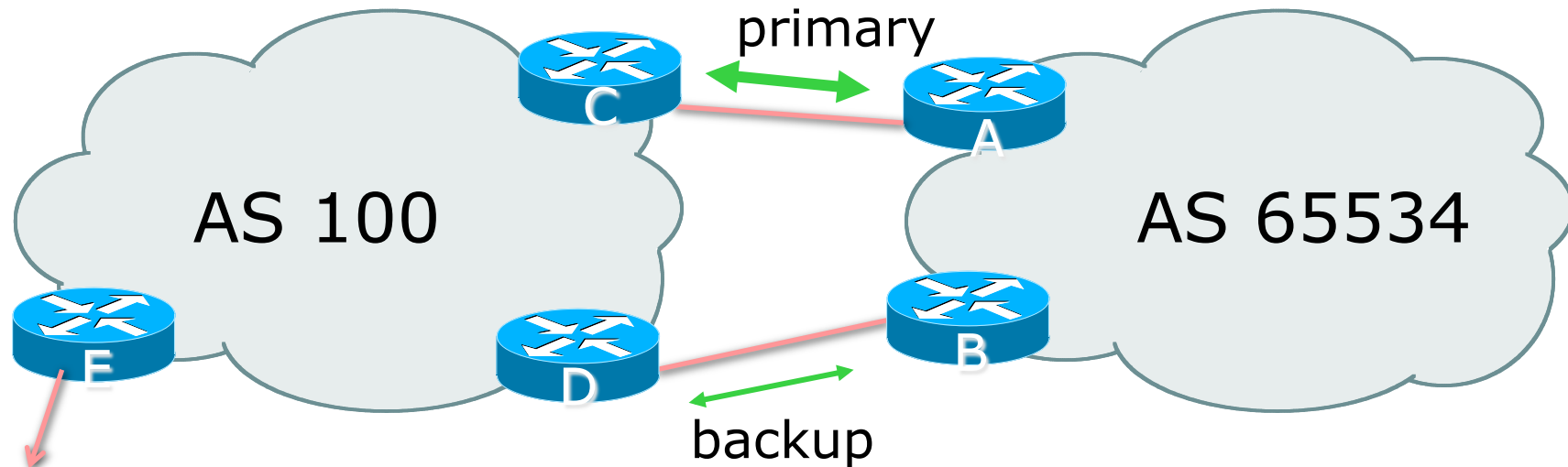


One link primary, the other link
backup only

Two links to the same ISP (one as backup only)

- Applies when end-site has bought a large primary WAN link to their upstream a small secondary WAN link as the backup
 - For example, primary path might be an E1, backup might be 64kbps

Two links to the same ISP (one as backup only)



- AS100 removes private AS and any customer subprefixes from Internet announcement

Two links to the same ISP (one as backup only)

- Announce /19 aggregate on each link
 - primary link:
 - Outbound – announce /19 unaltered
 - Inbound – receive default route
 - backup link:
 - Outbound – announce /19 with increased metric
 - Inbound – received default, and reduce local preference
- When one link fails, the announcement of the /19 aggregate via the other link ensures continued connectivity

Two links to the same ISP (one as backup only)

□ Router A Configuration

```
router bgp 65534
  network 121.10.0.0 mask 255.255.224.0
  neighbor 122.102.10.2 remote-as 100
  neighbor 122.102.10.2 description RouterC
  neighbor 122.102.10.2 prefix-list aggregate out
  neighbor 122.102.10.2 prefix-list default in
  !
  ip prefix-list aggregate permit 121.10.0.0/19
  ip prefix-list default permit 0.0.0.0/0
  !
  ip route 121.10.0.0 255.255.224.0 null0
```

Two links to the same ISP (one as backup only)

□ Router B Configuration

```
router bgp 65534
  network 121.10.0.0 mask 255.255.224.0
  neighbor 122.102.10.6 remote-as 100
  neighbor 122.102.10.6 description RouterD
  neighbor 122.102.10.6 prefix-list aggregate out
  neighbor 122.102.10.6 route-map routerD-out out
  neighbor 122.102.10.6 prefix-list default in
  neighbor 122.102.10.6 route-map routerD-in in
```

!

..next slide

Two links to the same ISP (one as backup only)

```
ip prefix-list aggregate permit 121.10.0.0/19
ip prefix-list default permit 0.0.0.0/0
!
ip route 121.10.0.0 255.255.224.0 null0
!
route-map routerD-out permit 10
  set metric 10
!
route-map routerD-in permit 10
  set local-preference 90
!
```

Two links to the same ISP (one as backup only)

□ Router C Configuration (main link)

```
router bgp 100
  neighbor 122.102.10.1 remote-as 65534
  neighbor 122.102.10.1 default-originate
  neighbor 122.102.10.1 prefix-list Customer in
  neighbor 122.102.10.1 prefix-list default out
!
ip prefix-list Customer permit 121.10.0.0/19
ip prefix-list default permit 0.0.0.0/0
```

Two links to the same ISP (one as backup only)

□ Router D Configuration (backup link)

```
router bgp 100
  neighbor 122.102.10.5 remote-as 65534
  neighbor 122.102.10.5 default-originate
  neighbor 122.102.10.5 prefix-list Customer in
  neighbor 122.102.10.5 prefix-list default out
!
ip prefix-list Customer permit 121.10.0.0/19
ip prefix-list default permit 0.0.0.0/0
```


Two links to the same ISP (one as backup only)

❑ Router E Configuration

```
router bgp 100
  neighbor 122.102.10.17 remote-as 110
  neighbor 122.102.10.17 remove-private-AS
  neighbor 122.102.10.17 prefix-list Customer out
```

!

```
ip prefix-list Customer permit 121.10.0.0/19
```

- ❑ Router E removes the private AS and customer's subprefixes from external announcements
- ❑ Private AS still visible inside AS100

Two links to the same ISP

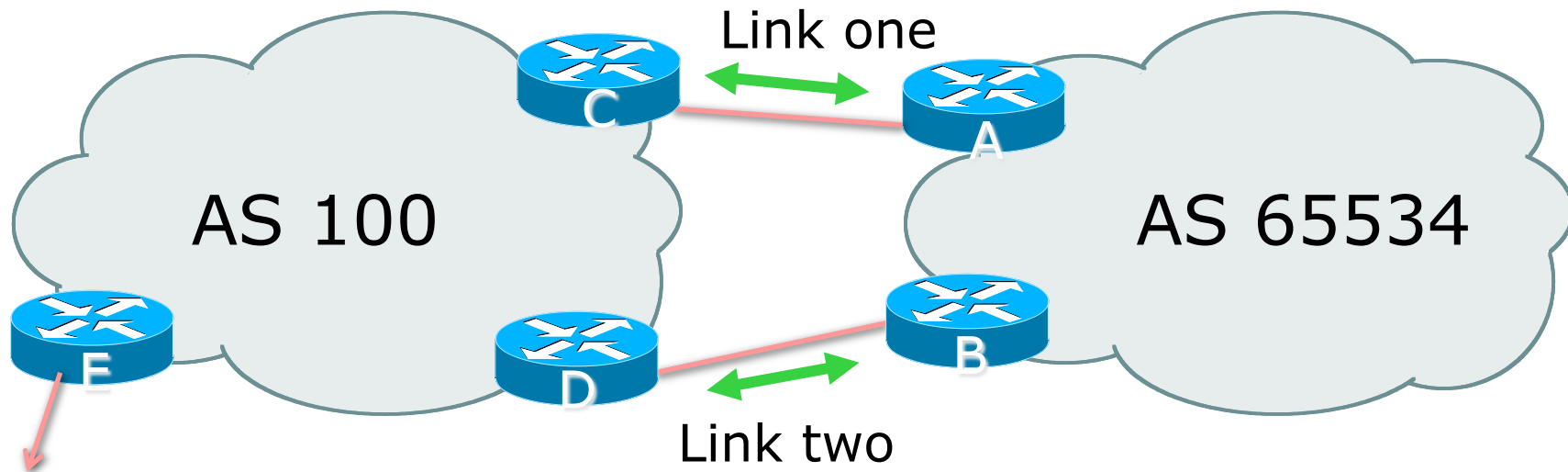


With Loadsharing

Loadsharing to the same ISP

- More common case
- End sites tend not to buy circuits and leave them idle, only used for backup as in previous example
- This example assumes equal capacity circuits
 - Unequal capacity circuits requires more refinement – see later

Loadsharing to the same ISP



- ❑ Border router E in AS100 removes private AS and any customer subprefixes from Internet announcement

Loadsharing to the same ISP

- ❑ Announce /19 aggregate on each link
- ❑ Split /19 and announce as two /20s, one on each link
 - basic inbound loadsharing
 - assumes equal circuit capacity and even spread of traffic across address block
- ❑ Vary the split until “perfect” loadsharing achieved
- ❑ Accept the default from upstream
 - basic outbound loadsharing by nearest exit
 - okay in first approx as most ISP and end-site traffic is inbound

Loadsharing to the same ISP (with redundancy)

□ Router A Configuration

```
router bgp 65534
  network 121.10.0.0 mask 255.255.224.0
  network 121.10.0.0 mask 255.255.240.0
  neighbor 122.102.10.2 remote-as 100
  neighbor 122.102.10.2 prefix-list routerC out
  neighbor 122.102.10.2 prefix-list default in
!
ip prefix-list default permit 0.0.0.0/0
ip prefix-list routerC permit 121.10.0.0/20
ip prefix-list routerC permit 121.10.0.0/19
!
ip route 121.10.0.0 255.255.240.0 null0
ip route 121.10.0.0 255.255.224.0 null0
```

Loadsharing to the same ISP (with redundancy)

- ❑ Router C Configuration

```
router bgp 100
  neighbor 122.102.10.1 remote-as 65534
  neighbor 122.102.10.1 default-originate
  neighbor 122.102.10.1 prefix-list Customer in
  neighbor 122.102.10.1 prefix-list default out
!
ip prefix-list Customer permit 121.10.0.0/19 le 20
ip prefix-list default permit 0.0.0.0/0
```

- ❑ Router C only allows in /19 and /20 prefixes from customer block
- ❑ Router D configuration is identical

Loadsharing to the same ISP (with redundancy)

❑ Router E Configuration

```
router bgp 100
  neighbor 122.102.10.17 remote-as 110
  neighbor 122.102.10.17 remove-private-AS
  neighbor 122.102.10.17 prefix-list Customer out
!
ip prefix-list Customer permit 121.10.0.0/19
```

❑ Private AS still visible inside AS100

Loadsharing to the same ISP (with redundancy)

- Default route for outbound traffic?
 - Use default-information originate for the IGP and rely on IGP metrics for nearest exit
 - e.g. on router A:

```
router ospf 65534
  default-information originate metric 2 metric-type 1
```

Loadsharing to the same ISP

- ❑ Loadsharing configuration is only on customer router
- ❑ Upstream ISP has to
 - remove customer subprefixes from external announcements
 - remove private AS from external announcements
- ❑ Could also use BGP communities

Two links to the same ISP

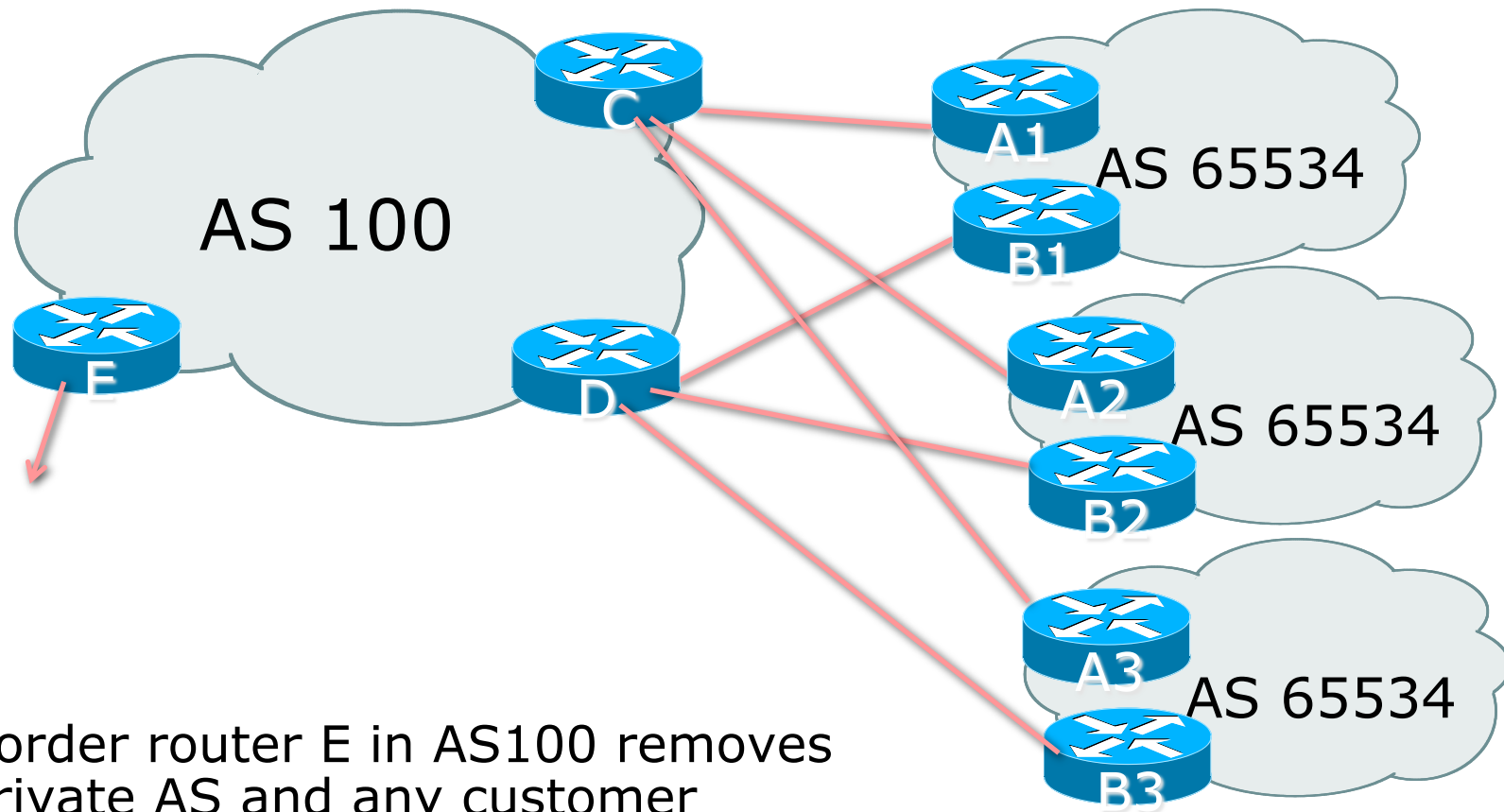


Multiple Dualhomed Customers
(RFC2270)

Multiple Dualhomed Customers (RFC2270)

- Unusual for an ISP just to have one dualhomed customer
 - Valid/valuable service offering for an ISP with multiple PoPs
 - Better for ISP than having customer multihome with another provider!
- Look at scaling the configuration
 - ⇒ Simplifying the configuration
 - Using templates, peer-groups, etc
 - Every customer has the same configuration (basically)

Multiple Dualhomed Customers (RFC2270)



- ❑ Border router E in AS100 removes private AS and any customer subprefixes from Internet announcement

Multiple Dualhomed Customers (RFC2270)

- ❑ Customer announcements as per previous example
- ❑ Use the same private AS for each customer
 - documented in RFC2270
 - address space is not overlapping
 - each customer hears default only
- ❑ Router An and Bn configuration same as Router A and B previously

Multiple Dualhomed Customers (RFC2270)

□ Router A1 Configuration

```
router bgp 65534
  network 121.10.0.0 mask 255.255.224.0
  network 121.10.0.0 mask 255.255.240.0
  neighbor 122.102.10.2 remote-as 100
  neighbor 122.102.10.2 prefix-list routerC out
  neighbor 122.102.10.2 prefix-list default in
!
ip prefix-list default permit 0.0.0.0/0
ip prefix-list routerC permit 121.10.0.0/20
ip prefix-list routerC permit 121.10.0.0/19
!
ip route 121.10.0.0 255.255.240.0 null0
ip route 121.10.0.0 255.255.224.0 null0
```

Multiple Dualhomed Customers (RFC2270)

□ Router C Configuration

```
router bgp 100
  neighbor bgp-customers peer-group
  neighbor bgp-customers remote-as 65534
  neighbor bgp-customers default-originate
  neighbor bgp-customers prefix-list default out
neighbor 122.102.10.1 peer-group bgp-customers
neighbor 122.102.10.1 description Customer One
neighbor 122.102.10.1 prefix-list Customer1 in
neighbor 122.102.10.9 peer-group bgp-customers
neighbor 122.102.10.9 description Customer Two
neighbor 122.102.10.9 prefix-list Customer2 in
```


Multiple Dualhomed Customers (RFC2270)

```
neighbor 122.102.10.17 peer-group bgp-customers
neighbor 122.102.10.17 description Customer Three
neighbor 122.102.10.17 prefix-list Customer3 in
!
ip prefix-list Customer1 permit 121.10.0.0/19 le 20
ip prefix-list Customer2 permit 121.16.64.0/19 le 20
ip prefix-list Customer3 permit 121.14.192.0/19 le 20
ip prefix-list default permit 0.0.0.0/0
```

- ❑ Router C only allows in /19 and /20 prefixes from customer block

Multiple Dualhomed Customers (RFC2270)

❑ Router E Configuration

- assumes customer address space is not part of upstream's address block

```
router bgp 100
  neighbor 122.102.10.17 remote-as 110
  neighbor 122.102.10.17 remove-private-AS
  neighbor 122.102.10.17 prefix-list Customers out
!
ip prefix-list Customers permit 121.10.0.0/19
ip prefix-list Customers permit 121.16.64.0/19
ip prefix-list Customers permit 121.14.192.0/19
```

❑ Private AS still visible inside AS100

Multiple Dualhomed Customers (RFC2270)

- ❑ If customers' prefixes come from ISP's address block
 - do **NOT** announce them to the Internet
 - announce ISP aggregate only
- ❑ Router E configuration:

```
router bgp 100
  neighbor 122.102.10.17 remote-as 110
  neighbor 122.102.10.17 prefix-list my-aggregate out
!
ip prefix-list my-aggregate permit 121.8.0.0/13
```

Multihoming Summary

- ❑ Use private AS for multihoming to the same upstream
- ❑ Leak subprefixes to upstream only to aid loadsharing
- ❑ Upstream router E configuration is identical across all situations

Basic Multihoming



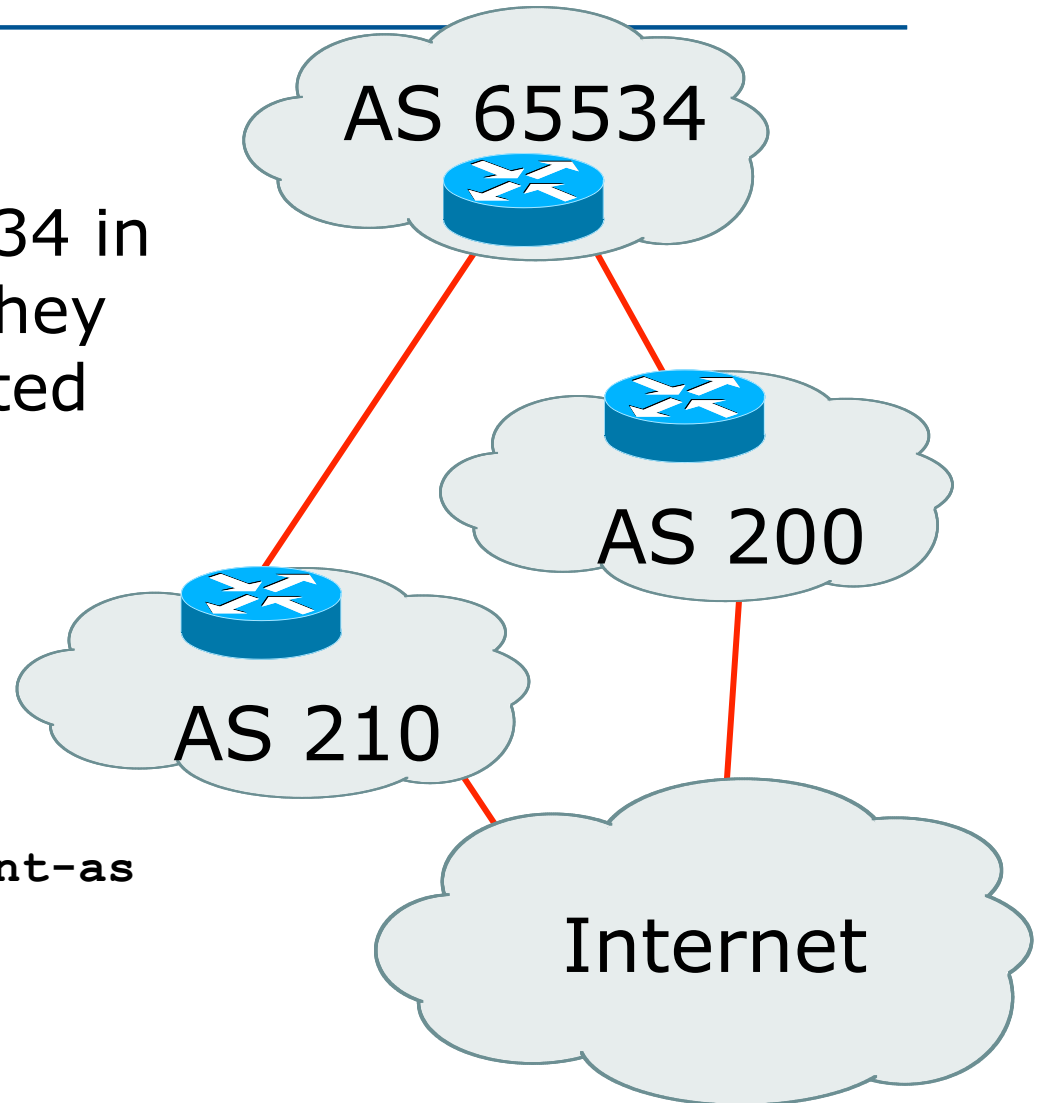
Multihoming to different ISPs

Two links to different ISPs

- Use a Public AS
 - Or use private AS if agreed with the other ISP
 - But some people don't like the "inconsistent-AS" which results from use of a private-AS
- Address space comes from
 - both upstreams or
 - Regional Internet Registry
- Configuration concepts very similar

Inconsistent-AS?

- ❑ Viewing the prefixes originated by AS65534 in the Internet shows they appear to be originated by both AS210 and AS200
 - This is NOT bad
 - Nor is it illegal
- ❑ IOS command is `show ip bgp inconsistent-as`

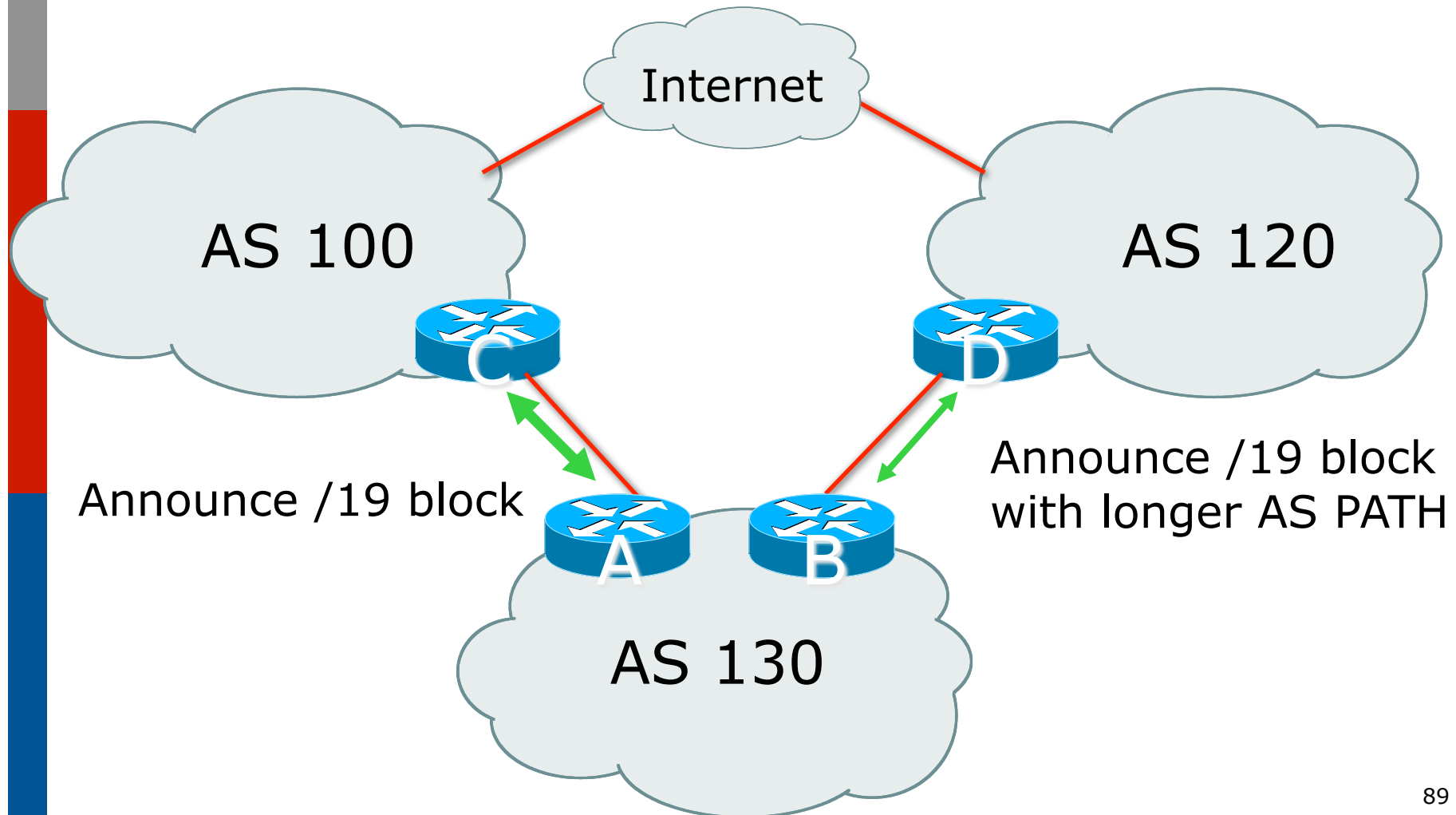


Two links to different ISPs



One link primary, the other link
backup only

Two links to different ISPs (one as backup only)



Two links to different ISPs (one as backup only)

- Announce /19 aggregate on each link
 - primary link makes standard announcement
 - backup link lengthens the AS PATH by using AS PATH prepend
- When one link fails, the announcement of the /19 aggregate via the other link ensures continued connectivity

Two links to different ISPs (one as backup only)

□ Router A Configuration

```
router bgp 130
  network 121.10.0.0 mask 255.255.224.0
  neighbor 122.102.10.1 remote-as 100
  neighbor 122.102.10.1 prefix-list aggregate out
  neighbor 122.102.10.1 prefix-list default in
  !
  ip prefix-list aggregate permit 121.10.0.0/19
  ip prefix-list default permit 0.0.0.0/0
  !
  ip route 121.10.0.0 255.255.224.0 null0
```

Two links to different ISPs (one as backup only)

❑ Router B Configuration

```
router bgp 130
  network 121.10.0.0 mask 255.255.224.0
  neighbor 120.1.5.1 remote-as 120
  neighbor 120.1.5.1 prefix-list aggregate out
  neighbor 120.1.5.1 route-map routerD-out out
  neighbor 120.1.5.1 prefix-list default in
  neighbor 120.1.5.1 route-map routerD-in in
  !
  ip prefix-list aggregate permit 121.10.0.0/19
  ip prefix-list default permit 0.0.0.0/0
  !
  route-map routerD-out permit 10
    set as-path prepend 130 130 130
  !
  route-map routerD-in permit 10
    set local-preference 80
```

Two links to different ISPs (one as backup only)

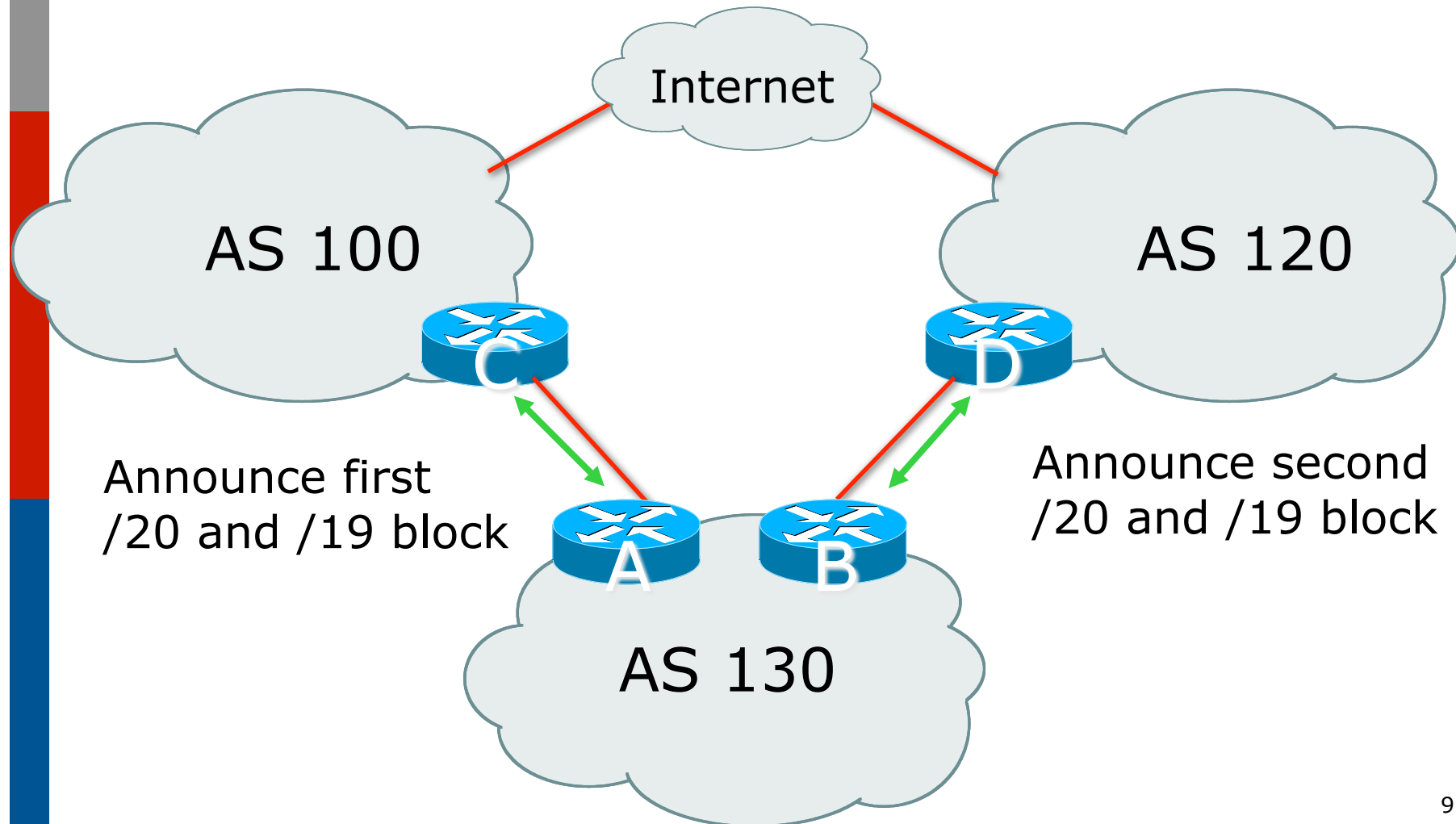
- ❑ Not a common situation as most sites tend to prefer using whatever capacity they have
 - (Useful when two competing ISPs agree to provide mutual backup to each other)
- ❑ But it shows the basic concepts of using local-prefs and AS-path prepends for engineering traffic in the chosen direction

Two links to different ISPs



With Loadsharing

Two links to different ISPs (with loadsharing)



Two links to different ISPs (with loadsharing)

- Announce /19 aggregate on each link
- Split /19 and announce as two /20s, one on each link
 - basic inbound loadsharing
- When one link fails, the announcement of the /19 aggregate via the other ISP ensures continued connectivity

Two links to different ISPs (with loadsharing)

□ Router A Configuration

```
router bgp 130
  network 121.10.0.0 mask 255.255.224.0
  network 121.10.0.0 mask 255.255.240.0
  neighbor 122.102.10.1 remote-as 100
  neighbor 122.102.10.1 prefix-list firstblock out
  neighbor 122.102.10.1 prefix-list default in
!
ip prefix-list default permit 0.0.0.0/0
!
ip prefix-list firstblock permit 121.10.0.0/20
ip prefix-list firstblock permit 121.10.0.0/19
```

Two links to different ISPs (with loadsharing)

□ Router B Configuration

```
router bgp 130
  network 121.10.0.0 mask 255.255.224.0
  network 121.10.16.0 mask 255.255.240.0
  neighbor 120.1.5.1 remote-as 120
  neighbor 120.1.5.1 prefix-list secondblock out
  neighbor 120.1.5.1 prefix-list default in
!
ip prefix-list default permit 0.0.0.0/0
!
ip prefix-list secondblock permit 121.10.16.0/20
ip prefix-list secondblock permit 121.10.0.0/19
```

Two links to different ISPs (with loadsharing)

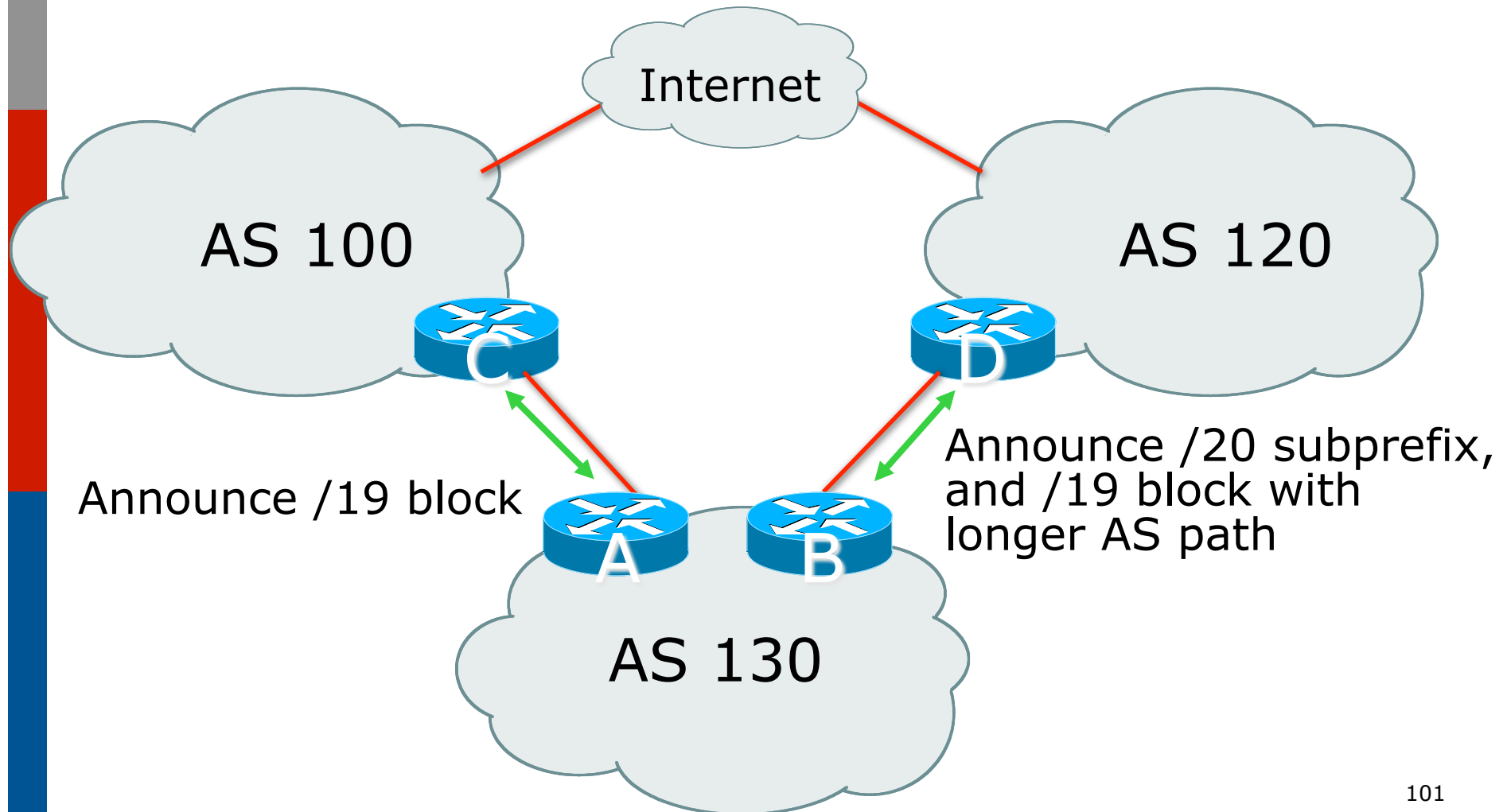
- Loadsharing in this case is very basic
- But shows the first steps in designing a load sharing solution
 - Start with a simple concept
 - And build on it...!

Two links to different ISPs



More Controlled Loadsharing

Loadsharing with different ISPs



Loadsharing with different ISPs

- Announce /19 aggregate on each link
 - On first link, announce /19 as normal
 - On second link, announce /19 with longer AS PATH, and announce one /20 subprefix
 - controls loadsharing between upstreams and the Internet
- Vary the subprefix size and AS PATH length until “perfect” loadsharing achieved
- Still require redundancy!

Loadsharing with different ISPs

□ Router A Configuration

```
router bgp 130
  network 121.10.0.0 mask 255.255.224.0
  neighbor 122.102.10.1 remote-as 100
  neighbor 122.102.10.1 prefix-list default in
  neighbor 122.102.10.1 prefix-list aggregate out
  !
  ip prefix-list aggregate permit 121.10.0.0/19
  ip prefix-list default permit 0.0.0.0/0
  !
  ip route 121.10.0.0 255.255.224.0 null0
```

Loadsharing with different ISPs

□ Router B Configuration

```
router bgp 130
  network 121.10.0.0 mask 255.255.224.0
  network 121.10.16.0 mask 255.255.240.0
  neighbor 120.1.5.1 remote-as 120
  neighbor 120.1.5.1 prefix-list default in
  neighbor 120.1.5.1 prefix-list subblocks out
  neighbor 120.1.5.1 route-map routerD out
!
route-map routerD permit 10
  match ip address prefix-list aggregate
  set as-path prepend 130 130
route-map routerD permit 20
!
ip prefix-list subblocks permit 121.10.0.0/19 le 20104
ip prefix-list aggregate permit 121.10.0.0/19
```


Loadsharing with different ISPs

- ❑ This example is more commonplace
- ❑ Shows how ISPs and end-sites subdivide address space frugally, as well as use the AS-PATH prepend concept to optimise the load sharing between different ISPs
- ❑ Notice that the /19 aggregate block is **ALWAYS** announced



BGP Multihoming Techniques

- Why Multihome?
- Definition & Options
- How to Multihome
- Principles & Addressing
- Basic Multihoming
- “BGP Traffic Engineering”
- Using Communities

Service Provider Multihoming



BGP Traffic Engineering

Service Provider Multihoming

- Previous examples dealt with loadsharing inbound traffic
 - Of primary concern at Internet edge
 - What about outbound traffic?
- Transit ISPs strive to balance traffic flows in both directions
 - Balance link utilisation
 - Try and keep most traffic flows symmetric
 - Some edge ISPs try and do this too
- The original “Traffic Engineering”

Service Provider Multihoming

- Balancing outbound traffic requires inbound routing information
 - Common solution is “full routing table”
 - Rarely necessary
 - Why use the “routing mallet” to try solve loadsharing problems?
 - “Keep It Simple” is often easier (and \$\$\$ cheaper) than carrying N-copies of the full routing table

Service Provider Multihoming

MYTHS!!

Common MYTHS

1. **You need the full routing table to multihome**
 - People who sell router memory would like you to believe this
 - Only true if you are a transit provider
 - Full routing table can be a significant hindrance to multihoming
2. **You need a BIG router to multihome**
 - Router size is related to data rates, not running BGP
 - In reality, to multihome, your router needs to:
 - Have two interfaces,
 - Be able to talk BGP to at least two peers,
 - Be able to handle BGP attributes,
 - Handle at least one prefix
3. **BGP is complex**
 - In the wrong hands, yes it can be! Keep it Simple!

Service Provider Multihoming: Some Strategies

- Take the prefixes you need to aid traffic engineering
 - Look at NetFlow data for popular sites
- Prefixes originated by your immediate neighbours and their neighbours will do more to aid load balancing than prefixes from ASNs many hops away
 - Concentrate on local destinations
- Use default routing as much as possible
 - Or use the full routing table with care

Service Provider Multihoming

- Examples
 - One upstream, one local peer
 - One upstream, local exchange point
 - Two upstreams, one local peer
- Require BGP and a public ASN
- Examples assume that the local network has their own /19 address block

Service Provider Multihoming

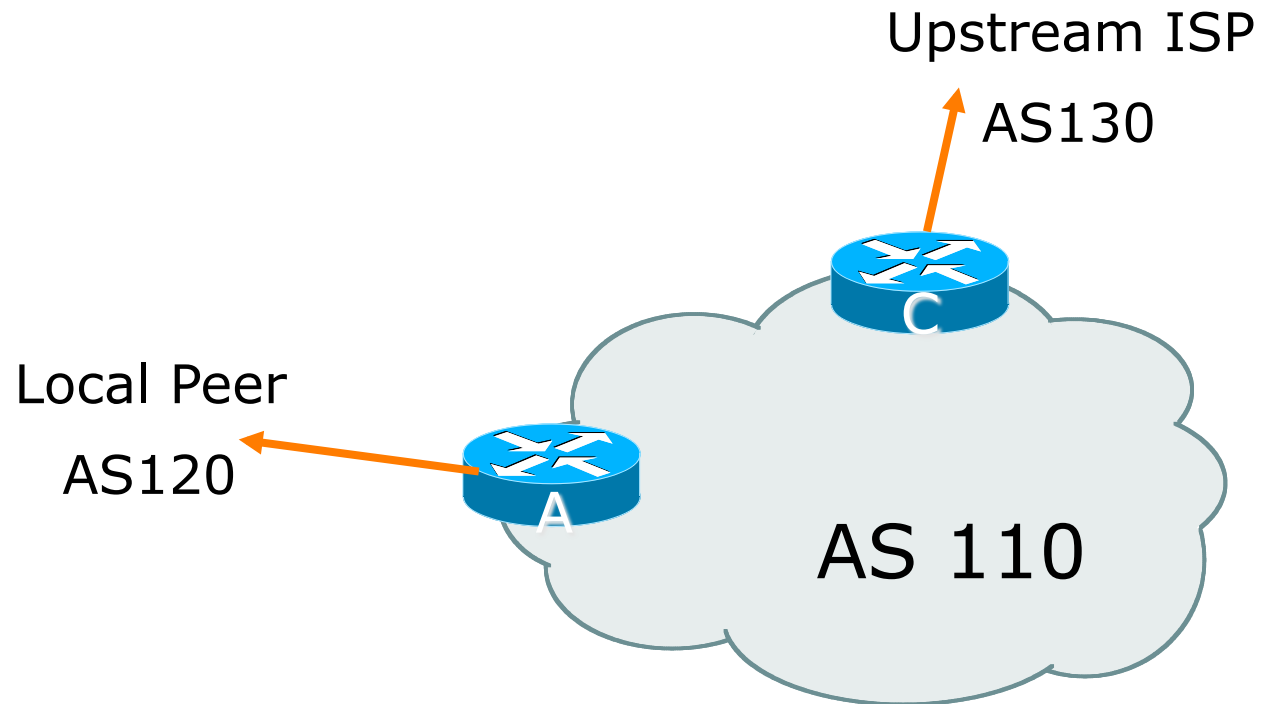


One upstream, one local peer

One Upstream, One Local Peer

- ❑ Very common situation in many regions of the Internet
- ❑ Connect to upstream transit provider to see the “Internet”
- ❑ Connect to the local competition so that local traffic stays local
 - Saves spending valuable \$ on upstream transit costs for local traffic

One Upstream, One Local Peer





One Upstream, One Local Peer

- Announce /19 aggregate on each link
- Accept default route only from upstream
 - Either 0.0.0.0/0 or a network which can be used as default
- Accept all routes from local peer

One Upstream, One Local Peer

□ Router A Configuration

```
router bgp 110
  network 121.10.0.0 mask 255.255.224.0
  neighbor 122.102.10.2 remote-as 120
  neighbor 122.102.10.2 prefix-list my-block out
  neighbor 122.102.10.2 prefix-list AS120-peer in
!
ip prefix-list AS120-peer permit 122.5.16.0/19
ip prefix-list AS120-peer permit 121.240.0.0/20
ip prefix-list my-block permit 121.10.0.0/19
!
ip route 121.10.0.0 255.255.224.0 null0 250
```

Prefix filters
inbound

One Upstream, One Local Peer

□ Router A – Alternative Configuration

```
router bgp 110
  network 121.10.0.0 mask 255.255.224.0
  neighbor 122.102.10.2 remote-as 120
  neighbor 122.102.10.2 prefix-list my-block out
  neighbor 122.102.10.2 filter-list 10 in
!
ip as-path access-list 10 permit ^(120_)+$
!
ip prefix-list my-block permit 121.10.0.0/19
!
ip route 121.10.0.0 255.255.224.0 null0
```

AS Path filters –
more “trusting”

One Upstream, One Local Peer

□ Router C Configuration

```
router bgp 110
  network 121.10.0.0 mask 255.255.224.0
  neighbor 122.102.10.1 remote-as 130
  neighbor 122.102.10.1 prefix-list default in
  neighbor 122.102.10.1 prefix-list my-block out
!
ip prefix-list my-block permit 121.10.0.0/19
ip prefix-list default permit 0.0.0.0/0
!
ip route 121.10.0.0 255.255.224.0 null0
```

One Upstream, One Local Peer

- Two configurations possible for Router A
 - Filter-lists assume peer knows what they are doing
 - Prefix-list higher maintenance, but safer
 - Some ISPs use **both**
- Local traffic goes to and from local peer, everything else goes to upstream



Aside:

Configuration Recommendations

□ Private Peers

- The peering ISPs exchange prefixes they originate
 - Sometimes they exchange prefixes from neighbouring ASNs too
- ### □ Be aware that the private peer eBGP router should carry only the prefixes you want the private peer to receive
- Otherwise they could point a default route to you and unintentionally transit your backbone

Service Provider Multihoming

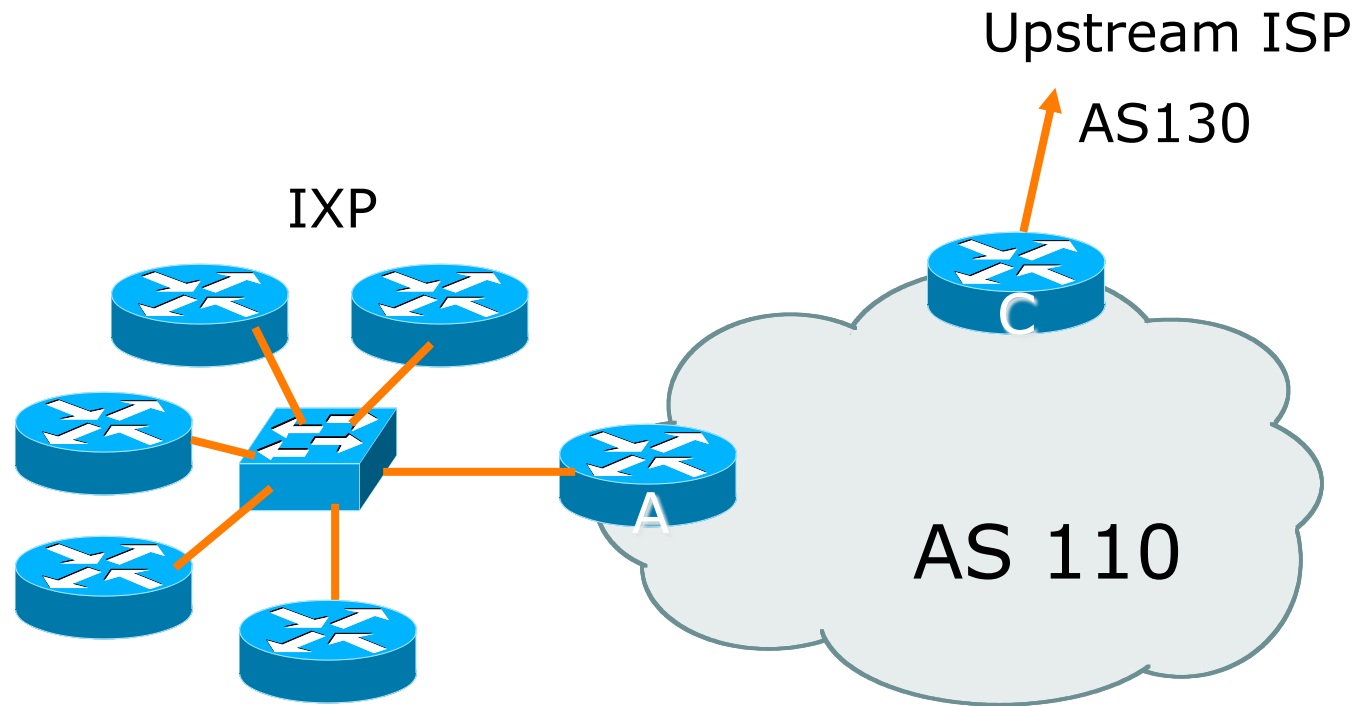


One upstream, Local Exchange
Point

One Upstream, Local Exchange Point

- ❑ Very common situation in many regions of the Internet
- ❑ Connect to upstream transit provider to see the “Internet”
- ❑ Connect to the local Internet Exchange Point so that local traffic stays local
 - Saves spending valuable \$ on upstream transit costs for local traffic

One Upstream, Local Exchange Point



One Upstream, Local Exchange Point

- ❑ Announce /19 aggregate to every neighbouring AS
- ❑ Accept default route only from upstream
 - Either 0.0.0.0/0 or a network which can be used as default
- ❑ Accept all routes originated by IXP peers

One Upstream, Local Exchange Point

□ Router A Configuration

```
interface fastethernet 0/0
  description Exchange Point LAN
  ip address 120.5.10.1 mask 255.255.255.224
!
router bgp 110
  neighbor ixp-peers peer-group
  neighbor ixp-peers prefix-list my-block out
  neighbor ixp-peers remove-private-AS
  neighbor ixp-peers send-community
  neighbor ixp-peers route-map set-local-pref in
...next slide
```

One Upstream, Local Exchange Point

```
neighbor 120.5.10.2 remote-as 100
neighbor 120.5.10.2 peer-group ixp-peers
neighbor 120.5.10.2 prefix-list peer100 in
neighbor 120.5.10.3 remote-as 101
neighbor 120.5.10.3 peer-group ixp-peers
neighbor 120.5.10.3 prefix-list peer101 in
neighbor 120.5.10.4 remote-as 102
neighbor 120.5.10.4 peer-group ixp-peers
neighbor 120.5.10.4 prefix-list peer102 in
neighbor 120.5.10.5 remote-as 103
neighbor 120.5.10.5 peer-group ixp-peers
neighbor 120.5.10.5 prefix-list peer103 in
...next slide
```

One Upstream, Local Exchange Point

```
!  
ip prefix-list my-block permit 121.10.0.0/19  
ip prefix-list peer100 permit 122.0.0.0/19  
ip prefix-list peer101 permit 122.30.0.0/19  
ip prefix-list peer102 permit 122.12.0.0/19  
ip prefix-list peer103 permit 122.18.128.0/19  
!  
route-map set-local-pref permit 10  
  set local-preference 150  
!
```


One Upstream, Local Exchange

- ❑ Note that Router A does not generate the aggregate for AS110
 - If Router A becomes disconnected from backbone, then the aggregate is no longer announced to the IX
 - BGP failover works as expected
- ❑ Note the inbound route-map which sets the local preference higher than the default
 - This ensures that BGP Best Path for local traffic will be across the IXP

One Upstream, Local Exchange Point

□ Router C Configuration

```
router bgp 110
  network 121.10.0.0 mask 255.255.224.0
  neighbor 122.102.10.1 remote-as 130
  neighbor 122.102.10.1 prefix-list default in
  neighbor 122.102.10.1 prefix-list my-block out
!
ip prefix-list my-block permit 121.10.0.0/19
ip prefix-list default permit 0.0.0.0/0
!
ip route 121.10.0.0 255.255.224.0 null0
```

One Upstream, Local Exchange Point

- Note Router A configuration
 - Prefix-list higher maintenance, but safer
 - No generation of AS110 aggregate
- IXP traffic goes to and from local IXP, everything else goes to upstream



Aside:

IXP Configuration Recommendations

- IXP peers
 - The peering ISPs at the IXP exchange prefixes they originate
 - Sometimes they exchange prefixes from neighbouring ASNs too
- Be aware that the IXP border router should carry only the prefixes you want the IXP peers to receive and the destinations you want them to be able to reach
 - Otherwise they could point a default route to you and unintentionally transit your backbone
- If IXP router is at IX, and distant from your backbone
 - Don't originate your address block at your IXP router

Service Provider Multihoming

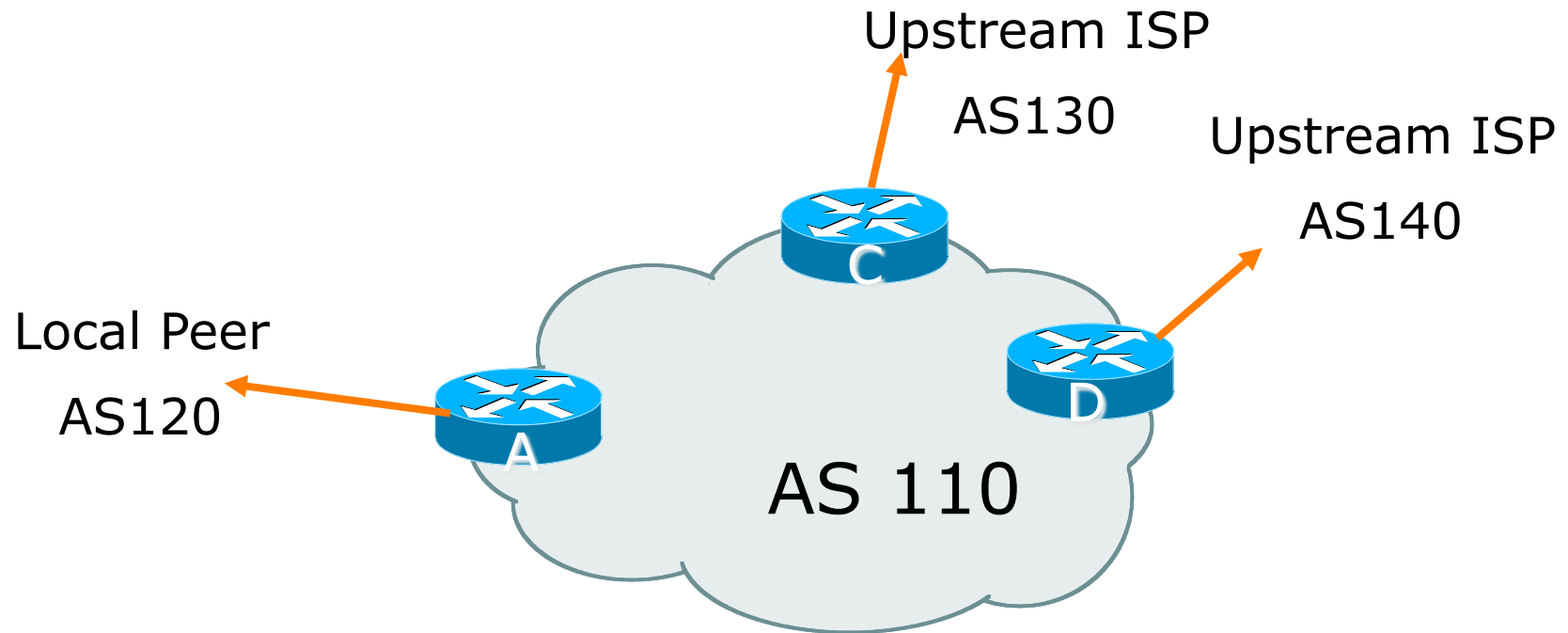


Two Upstreams, One local peer

Two Upstreams, One Local Peer

- Connect to both upstream transit providers to see the “Internet”
 - Provides external redundancy and diversity – the reason to multihome
- Connect to the local peer so that local traffic stays local
 - Saves spending valuable \$ on upstream transit costs for local traffic

Two Upstreams, One Local Peer



Two Upstreams, One Local Peer

- Announce /19 aggregate on each link
- Accept default route only from upstreams
 - Either 0.0.0.0/0 or a network which can be used as default
- Accept all routes from local peer
- Note separation of Router C and D
 - Single edge router means no redundancy
- Router A
 - Same routing configuration as in example with one upstream and one local peer

Two Upstreams, One Local Peer

□ Router C Configuration

```
router bgp 110
  network 121.10.0.0 mask 255.255.224.0
  neighbor 122.102.10.1 remote-as 130
  neighbor 122.102.10.1 prefix-list default in
  neighbor 122.102.10.1 prefix-list my-block out
!
ip prefix-list my-block permit 121.10.0.0/19
ip prefix-list default permit 0.0.0.0/0
!
ip route 121.10.0.0 255.255.224.0 null0
```

Two Upstreams, One Local Peer

□ Router D Configuration

```
router bgp 110
  network 121.10.0.0 mask 255.255.224.0
  neighbor 122.102.10.5 remote-as 140
  neighbor 122.102.10.5 prefix-list default in
  neighbor 122.102.10.5 prefix-list my-block out
!
ip prefix-list my-block permit 121.10.0.0/19
ip prefix-list default permit 0.0.0.0/0
!
ip route 121.10.0.0 255.255.224.0 null0
```

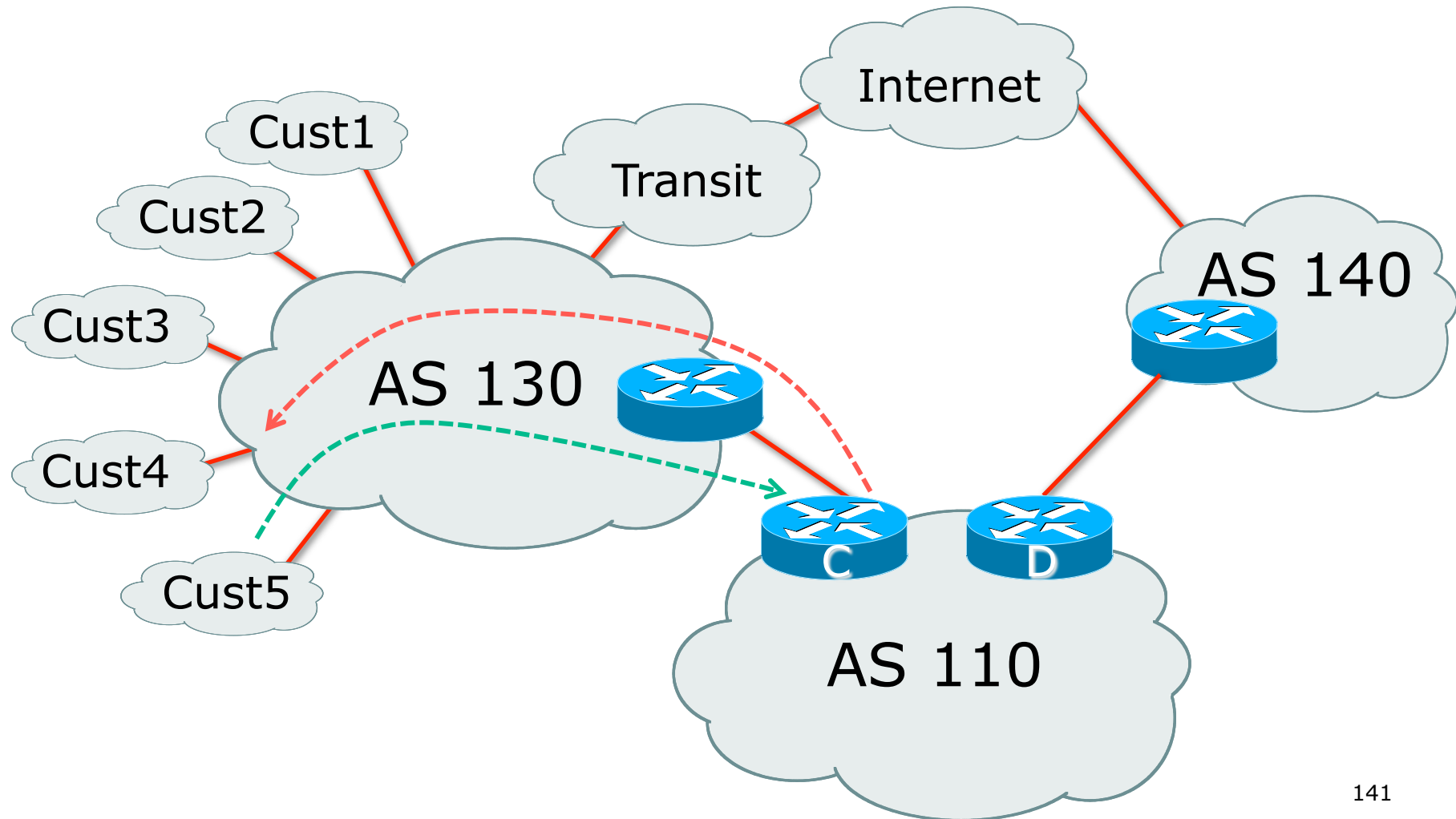
Two Upstreams, One Local Peer

- ❑ This is the simple configuration for Router C and D
- ❑ Traffic out to the two upstreams will take nearest exit
 - Inexpensive routers required
 - This is not useful in practice especially for international links
 - Loadsharing needs to be better

Two Upstreams, One Local Peer

- Better configuration options:
 - Accept full routing from both upstreams
 - **Expensive & unnecessary!**
 - Accept default from one upstream and some routes from the other upstream
 - **The way to go!**

Loadsharing with different ISPs



Two Upstreams, One Local Peer

Full Routes

□ Router C Configuration

```
router bgp 110
```

```
network 121.10.0.0 mask 255.255.224.0
```

```
neighbor 122.102.10.1 remote-as 130
```

```
neighbor 122.102.10.1 prefix-list rfc1918-deny in
```

```
neighbor 122.102.10.1 prefix-list my-block out
```

```
neighbor 122.102.10.1 route-map AS130-loadshare in
```

```
!
```

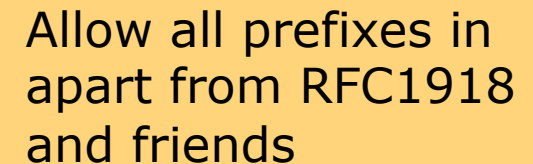
```
ip prefix-list my-block permit 121.10.0.0/19
```

```
! See www.cymru.com/Documents/bogon-list.html
```

```
! ...for "RFC1918 and friends" list
```

```
...next slide
```

Allow all prefixes in
apart from RFC1918
and friends



Two Upstreams, One Local Peer

Full Routes

```
ip route 121.10.0.0 255.255.224.0 null0
!
ip as-path access-list 10 permit ^(130_)+$
ip as-path access-list 10 permit ^(130_)+_[0-9]+$
!
route-map AS130-loadshare permit 10
  match ip as-path 10
  set local-preference 120
!
route-map AS130-loadshare permit 20
  set local-preference 80
!
```

Two Upstreams, One Local Peer

Full Routes

□ Router D Configuration

```
router bgp 110
```

```
network 121.10.0.0 mask 255.255.224.0
```

```
neighbor 122.102.10.5 remote-as 140
```

```
neighbor 122.102.10.5 prefix-list rfc1918-deny in
```

```
neighbor 122.102.10.5 prefix-list my-block out
```

```
!
```

```
ip prefix-list my-block permit 121.10.0.0/19
```

```
! See www.cymru.com/Documents/bogon-list.html
```

```
! ...for "RFC1918 and friends" list
```

Allow all prefixes in
apart from RFC1918
and friends

Two Upstreams, One Local Peer

Full Routes

- Router C configuration:
 - Accept full routes from AS130
 - Tag prefixes originated by AS130 and AS130's neighbouring ASes with local preference 120
 - Traffic to those ASes will go over AS130 link
 - Remaining prefixes tagged with local preference of 80
 - Traffic to other all other ASes will go over the link to AS140
- Router D configuration same as Router C without the route-map

Two Upstreams, One Local Peer

Full Routes

- Full routes from upstreams
 - Summary of routes received:

ASN	Full Routes	Partial Routes
AS140	430000 @ Ip100	
AS130	30000 @ Ip 120 400000 @ Ip 80	
Total	860000	

Two Upstreams, One Local Peer

Full Routes

- Full routes from upstreams
 - Expensive – needs lots of memory and CPU
 - Need to play preference games
 - Previous example is only an example – real life will need improved fine-tuning!
 - Previous example doesn't consider inbound traffic – see earlier in presentation for examples

Two Upstreams, One Local Peer

Partial Routes: Strategy

- Ask one upstream for a default route
 - Easy to originate default towards a BGP neighbour
- Ask other upstream for a full routing table
 - Then filter this routing table based on neighbouring ASN
 - E.g. want traffic to their neighbours to go over the link to that ASN
 - Most of what upstream sends is thrown away
 - Easier than asking the upstream to set up custom BGP filters for you

Two Upstreams, One Local Peer

Partial Routes

❑ Router C Configuration

```
router bgp 110
  network 121.10.0.0 mask 255.255.224.0
  neighbor 122.102.10.1 remote-as 130
  neighbor 122.102.10.1 prefix-list rfc1918-noddef-deny in
  neighbor 122.102.10.1 prefix-list my-block out
  neighbor 122.102.10.1 filter-list 10 in
  neighbor 122.102.10.1 route-map tag-default-low in
!
```

...next slide

Allow all prefixes and default in; deny RFC1918 and friends

AS filter list filters prefixes based on origin ASN

Two Upstreams, One Local Peer

Partial Routes

```
ip prefix-list my-block permit 121.10.0.0/19
ip prefix-list default permit 0.0.0.0/0
!
ip route 121.10.0.0 255.255.224.0 null0
!
ip as-path access-list 10 permit ^(130_)+$
ip as-path access-list 10 permit ^(130_)+_[0-9]+$
!
route-map tag-default-low permit 10
  match ip address prefix-list default
  set local-preference 80
!
route-map tag-default-low permit 20
!
```

Two Upstreams, One Local Peer

Partial Routes

□ Router D Configuration

```
router bgp 110
  network 121.10.0.0 mask 255.255.224.0
  neighbor 122.102.10.5 remote-as 140
  neighbor 122.102.10.5 prefix-list default in
  neighbor 122.102.10.5 prefix-list my-block out
!
ip prefix-list my-block permit 121.10.0.0/19
ip prefix-list default permit 0.0.0.0/0
!
ip route 121.10.0.0 255.255.224.0 null0
```

Two Upstreams, One Local Peer

Partial Routes

- Router C configuration:
 - Accept full routes from AS130
 - (or get them to send less)
 - Filter ASNs so only AS130 and AS130's neighbouring ASes are accepted
 - Allow default, and set it to local preference 80
 - Traffic to those ASes will go over AS130 link
 - Traffic to other all other ASes will go over the link to AS140
 - If AS140 link fails, backup via AS130 – and vice-versa

Two Upstreams, One Local Peer

Partial Routes

- Partial routes from upstreams
 - Summary of routes received:

ASN	Full Routes	Partial Routes
AS140	430000 @ Ip100	1 @ Ip 100
AS130	30000 @ Ip 120 400000 @ Ip 80	30000 @ Ip 100 1 @ Ip 80
Total	860000	30002

Two Upstreams, One Local Peer

Partial Routes

❑ Router C IGP Configuration

```
router ospf 110
default-information originate metric 30
passive-interface Serial 0/0
!
ip route 0.0.0.0 0.0.0.0 serial 0/0 254
```

❑ Router D IGP Configuration

```
router ospf 110
default-information originate metric 10
passive-interface Serial 0/0
!
ip route 0.0.0.0 0.0.0.0 serial 0/0 254
```

Two Upstreams, One Local Peer

Partial Routes

- Partial routes from upstreams
 - Use OSPF to determine outbound path
 - Router D default has metric 10 – primary outbound path
 - Router C default has metric 30 – backup outbound path
 - Serial interface goes down, static default is removed from routing table, OSPF default withdrawn

Two Upstreams, One Local Peer

Partial Routes

- Partial routes from upstreams
 - Not expensive – only carry the routes necessary for loadsharing
 - Need to filter on AS paths
 - Previous example is only an example – real life will need improved fine-tuning!
 - Previous example doesn't consider inbound traffic – see earlier in presentation for examples

Aside:

Configuration Recommendation

- When distributing internal default by iBGP or OSPF/ISIS
 - Make sure that routers connecting to private peers or to IXPs do NOT carry the default route
 - Otherwise they could point a default route to you and unintentionally transit your backbone
 - Simple fix for Private Peer/IXP routers:

```
ip route 0.0.0.0 0.0.0.0 null0
```

BGP Multihoming Techniques

- Why Multihome?
- Definition & Options
- How to Multihome
- Principles & Addressing
- Basic Multihoming
- “BGP Traffic Engineering”
- Using Communities

Using Communities for BGP Traffic Engineering



How they are used in practice
for multihoming

Multihoming and Communities

- The BGP community attribute is a very powerful tool for assisting and scaling BGP Multihoming
- Most major ISPs make extensive use of BGP communities:
 - Internal policies
 - Inter-provider relationships (MED replacement)
 - Customer traffic engineering

Using BGP Communities

- Three scenarios are covered:
 - Use of RFC1998 traffic engineering
 - Extending RFC 1998 ideas for even greater customer policy options
 - Community use in ISP backbones

RFC1998

- Informational RFC
- Describes how to implement loadsharing and backup on multiple inter-AS links
 - BGP communities used to determine local preference in upstream's network
- Gives control to the customer
 - Means the customer does not have to phone upstream's technical support to adjust traffic engineering needs
- Simplifies upstream's configuration
 - simplifies network operation!

RFC1998

- ❑ RFC1998 Community values are defined to have particular meanings
- ❑ ASx:100 `set local preference 100`
 - Make this the preferred path
- ❑ ASx :90 `set local preference 90`
 - Make this the backup if dualhomed on ASx
- ❑ ASx :80 `set local preference 80`
 - The main link is to another ISP with same AS path length
- ❑ ASx :70 `set local preference 70`
 - The main link is to another ISP

RFC1998

- Upstream ISP defines the communities mentioned
- Their customers then attach the communities they want to use to the prefix announcements they are making
- For example:
 - If upstream is AS 100
 - To declare a particular path as a backup path, their customer would announce the prefix with community 100:70 to AS100
 - AS100 would receive the prefix with the community 100:70 tag, and then set local preference to be 70

RFC1998

□ Sample Customer Router Configuration

```
router bgp 130
  neighbor x.x.x.x remote-as 100
  neighbor x.x.x.x description Backup ISP
  neighbor x.x.x.x route-map as100-out out
  neighbor x.x.x.x send-community
!
ip as-path access-list 20 permit ^$
!
route-map as100-out permit 10
  match as-path 20
  set community 100:70
!
```

RFC1998

□ Sample ISP Router Configuration

```
router bgp 100
  neighbor y.y.y.y remote-as 130
  neighbor y.y.y.y route-map customer-policy-in in
!
! Homed to another ISP
ip community-list 7 permit 100:70
! Homed to another ISP with equal ASPATH length
ip community-list 8 permit 100:80
! Customer backup routes
ip community-list 9 permit 100:90
!
```

RFC1998

```
route-map customer-policy-in permit 10
  match community 7
  set local-preference 70
!
route-map customer-policy-in permit 20
  match community 8
  set local-preference 80
!
route-map customer-policy-in permit 30
  match community 9
  set local-preference 90
!
route-map customer-policy-in permit 40
  set local-preference 100
!
```

RFC1998

- ❑ RFC1998 was the inspiration for a large variety of differing community policies implemented by ISPs worldwide
- ❑ There are no “standard communities” for what ISPs do
- ❑ But best practices today consider that ISPs should use BGP communities extensively for multihoming support of traffic engineering
- ❑ Look in the ISP AS Object in the IRR for documented community support

Service Provider use of Communities



RFC1998 was so inspiring...

Background

- RFC1998 is okay for “simple” multihoming situations
- ISPs create backbone support for many other communities to handle more complex situations
 - Simplify ISP BGP configuration
 - Give customer more policy control

ISP BGP Communities

- There are no recommended ISP BGP communities apart from
 - RFC1998
 - The five standard communities
 - www.iana.org/assignments/bgp-well-known-communities
- Efforts have been made to document from time to time
 - totem.info.ucl.ac.be/publications/papers-elec-versions/draft-quoitin-bgp-comm-survey-00.pdf
 - But so far... nothing more... ☹
 - Collection of ISP communities at www.onesc.net/communities
 - www.nanog.org/meetings/nanog40/presentations/BGPcommunities.pdf
- ISP policy is usually published
 - On the ISP's website
 - Referenced in the AS Object in the IRR

Typical ISP BGP Communities

- X:80 **set local preference 80**
 - Backup path
- X:120 **set local preference 120**
 - Primary path (over ride BGP path selection default)
- X:1 **set as-path prepend X**
 - Single prepend when announced to X's upstreams
- X:2 **set as-path prepend X X**
 - Double prepend when announced to X's upstreams
- X:3 **set as-path prepend X X X**
 - Triple prepend when announced to X's upstreams
- X:666 **set ip next-hop 192.0.2.1**
 - Blackhole route - very useful for DoS attack mitigation

Sample Router Configuration (1)

```
router bgp 100
  neighbor y.y.y.y remote-as 130
  neighbor y.y.y.y route-map customer-policy-in in
  neighbor z.z.z.z remote-as 200
  neighbor z.z.z.z route-map upstream-out out
!
ip community-list 1 permit 100:1
ip community-list 2 permit 100:2
ip community-list 3 permit 100:3
ip community-list 4 permit 100:80
ip community-list 5 permit 100:120
ip community-list 6 permit 100:666
!
ip route 192.0.2.1 255.255.255.255 null0
```

Customer BGP

Upstream BGP

Black hole route
(on all routers)

Sample Router Configuration (2)

```
route-map customer-policy-in permit 10
  match community 4
  set local-preference 80
!
route-map customer-policy-in permit 20
  match community 5
  set local-preference 120
!
route-map customer-policy-in permit 30
  match community 6
  set ip next-hop 192.0.2.1
!
route-map customer-policy-in permit 40
...etc...
```

Sample Router Configuration (3)

```
route-map upstream-out permit 10
  match community 1
  set as-path prepend 100
!
route-map upstream-out permit 20
  match community 2
  set as-path prepend 100 100
!
route-map upstream-out permit 30
  match community 3
  set as-path prepend 100 100 100
!
route-map upstream-out permit 40
...etc...
```

WHAT YOU CAN CONTROL

AS-PATH PREPENDS

Sprint allows customers to use AS-path prepending to adjust route preference on the network. Such prepending will be received and passed on properly without notifying Sprint of your change in announcements.

Additionally, Sprint will prepend AS1239 to eBGP sessions with certain autonomous systems depending on a received community. Currently, the following ASes are supported: 1668, 209, 2914, 3300, 3356, 3549, 3561, 4635, 701, 7018, 702 and 8220.

String	Resulting AS Path to ASXXX
--------	----------------------------

6500:XXX	Do not advertise to ASXXX
6501:XXX	1239 (default) ...
6502:XXX	1239 1239 ...
6503:XXX	1239 1239 1239 ...
6504:XXX	1239 1239 1239 1239 ...

String	Resulting AS Path to ASXXX in Asia
--------	------------------------------------

6507:XXX	Do not advertise to ASXXX
65071:XXX	1239 (default) ...
65072:XXX	1239 1239 ...
65073:XXX	1239 1239 1239 ...
65074:XXX	1239 1239 1239 1239 ...

String	Resulting AS Path to ASXXX in Europe
--------	--------------------------------------

6505:XXX	Do not advertise to ASXXX
65051:XXX	1239 (default) ...
65052:XXX	1239 1239 ...
65053:XXX	1239 1239 1239 ...
65054:XXX	1239 1239 1239 1239 ...

More info at https://www.sprint.net/index.php?p=policy_bgp

ISP Example:

Verizon Business Europe

```
aut-num: AS702
descr: Verizon Business EMEA - Commercial IP service provider in Eur
remarks: VzBi uses the following communities with its customers:
 702:80 Set Local Pref 80 within AS702
 702:120 Set Local Pref 120 within AS702
 702:20 Announce only to VzBi AS'es and VzBi customers
 702:30 Keep within Europe, don't announce to other VzBi AS
 702:1 Prepend AS702 once at edges of VzBi to Peers
 702:2 Prepend AS702 twice at edges of VzBi to Peers
 702:3 Prepend AS702 thrice at edges of VzBi to Peers
Advanced communities for customers
 702:7020 Do not announce to AS702 peers with a scope of
          National but advertise to Global Peers, European
          Peers and VzBi customers.
 702:7001 Prepend AS702 once at edges of VzBi to AS702
          peers with a scope of National.
 702:7002 Prepend AS702 twice at edges of VzBi to AS702
          peers with a scope of National.
```

(more)

ISP Example:

Verizon Business Europe

(more)

```
702:7003 Prepend AS702 thrice at edges of VzBi to AS702
        peers with a scope of National.
702:8020 Do not announce to AS702 peers with a scope of
        European but advertise to Global Peers, National
        Peers and VzBi customers.
702:8001 Prepend AS702 once at edges of VzBi to AS702
        peers with a scope of European.
702:8002 Prepend AS702 twice at edges of VzBi to AS702
        peers with a scope of European.
702:8003 Prepend AS702 thrice at edges of VzBi to AS702
        peers with a scope of European.
```

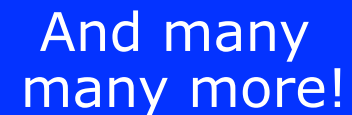
Additional details of the VzBi communities are located at:
<http://www.verizonbusiness.com/uk/customer/bgp/>

```
mnt-by: WCOM-EMEA-RICE-MNT
source: RIPE
```

ISP Example:

BT Ignite

```
aut-num: AS5400
descr: BT Ignite European Backbone
remarks:
remarks: Community to Community to
remarks: Not announce To peer: AS prepend 5400
remarks:
remarks: 5400:1000 All peers & Transits 5400:2000
remarks:
remarks: 5400:1500 All Transits 5400:2500
remarks: 5400:1501 Sprint Transit (AS1239) 5400:2501
remarks: 5400:1502 SAVVIS Transit (AS3561) 5400:2502
remarks: 5400:1503 Level 3 Transit (AS3356) 5400:2503
remarks: 5400:1504 AT&T Transit (AS7018) 5400:2504
remarks: 5400:1506 GlobalCrossing Trans (AS3549) 5400:2506
remarks:
remarks: 5400:1001 Nexica (AS24592) 5400:2001
remarks: 5400:1002 Fujitsu (AS3324) 5400:2002
remarks: 5400:1004 C&W EU (1273) 5400:2004
<snip>
notify: notify@eu.bt.net
mnt-by: CIP-MNT
source: RIPE
```




And many
many more!

ISP Example:

Level 3

```
aut-num:      AS3356
descr:       Level 3 Communications
<snip>
remarks:     -----
remarks:     customer traffic engineering communities - Suppression
remarks:     -----
remarks:     64960:XXX - announce to AS XXX if 65000:0
remarks:     65000:0   - announce to customers but not to peers
remarks:     65000:XXX - do not announce at peerings to AS XXX
remarks:     -----
remarks:     customer traffic engineering communities - Prepending
remarks:     -----
remarks:     65001:0   - prepend once to all peers
remarks:     65001:XXX - prepend once at peerings to AS XXX
<snip>
remarks:     3356:70  - set local preference to 70
remarks:     3356:80  - set local preference to 80
remarks:     3356:90  - set local preference to 90
remarks:     3356:9999 - blackhole (discard) traffic
<snip>
mnt-by:      LEVEL3-MNT
source:      RIPE
```

And many
many more!



Policies & Procedures – Routing Policies – NTT America – www.us.ntt.net

http://www.us.ntt.net/support/policy/routing.cfm

Policies & Procedures – Routing P...

BGP customer communities

Customers wanting to alter local preference on their routes.

NTT Communications BGP customers may choose to affect our local preference on their routes by marking their routes with the following communities:

Community	Local-pref	Description
(default)	120	customer
2914:450	96	customer fallback
2914:460	98	peer backup
2914:470	100	peer
2914:480	110	customer backup
2914:490	120	customer default
2914:666		blackhole

Customers wanting to alter their route announcements to other customers.

NTT Communications BGP customers may choose to prepend to all other NTT Communications BGP customers with the following communities:

Community	Description
2914:411	prepends o/b to customer 1x
2914:412	prepends o/b to customer 2x
2914:413	prepends o/b to customer 3x

Customers wanting to alter their route announcements to peers.

NTT Communications BGP customers may choose to prepend to all NTT Communications peers with the following communities:

Community	Description
2914:421	prepends o/b to peer 1x
2914:422	prepends o/b to peer 2x
2914:423	prepends o/b to peer 3x
2914:429	do not advertise to any peer
2914:439	do not advertise to any peer outside region

Note: If used, 655xx:nnn (see below) overrides the 2914:42x communities.

Customers wanting to alter their route announcements to selected peers.

NTT Communications BGP customers may choose to prepend to selected tier 1 peers with the following communities, where *nnn* is the tier 1 peer's ASN:

Community	Description
-----------	-------------

ISP Example: NTT

More info at www.us.ntt.net/about/policy/routing.cfm

Creating your own community policy

- Consider creating communities to give policy control to customers
 - Reduces technical support burden
 - Reduces the amount of router reconfiguration, and the chance of mistakes
 - Use the previous ISP and configuration examples as a guideline

Conclusion: Communities

- ❑ Communities are fun! 😊
- ❑ And they are extremely powerful tools
- ❑ Think about community policies, e.g. like the additions described here
- ❑ Supporting extensive community usage makes customer configuration easy
- ❑ Watch out for routing loops!

Summary



Summary

- Multihoming is not hard, really...
 - **Keep It Simple & Stupid!**
- Full routing table is *rarely* required
 - A default is often just as good
 - If customers want 430k prefixes, charge them money for it

BGP Multihoming Techniques



End of Tutorial