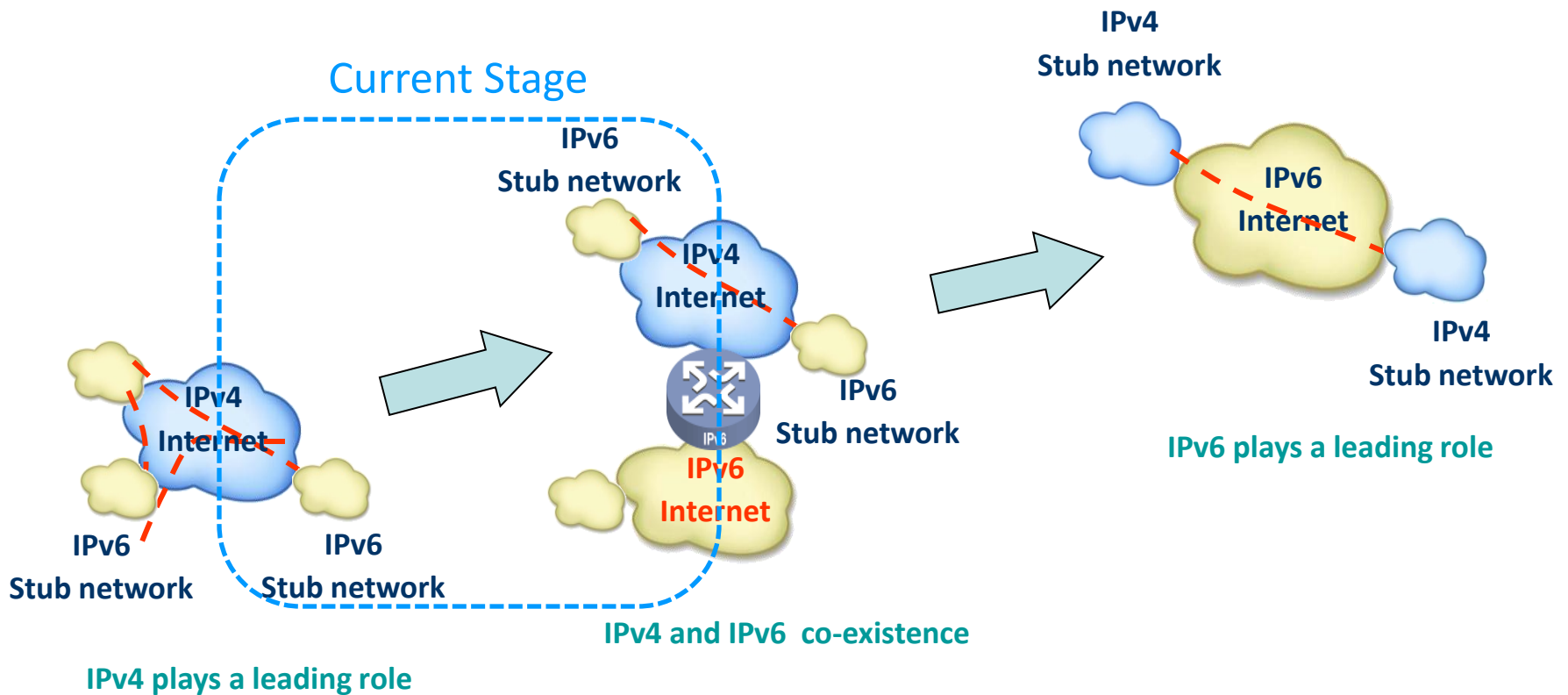

IPv6 CPE Device Development and Deployment

**APNIC 32 – Busan, South Korea
Aug. 30th 2011**



IPv4/IPv6 Transition

- ➔ IPv6 will not take over overnight.
- ➔ Different ISP might have a different strategy in offering IPv6 service.



D-Link Participation in World IPv6 Day

D-Link 25 YEARS of technology & innovation

Build Your Network | Find Your Product | Product Quick Find | Search D-Link

United States (change)


Home & Home Office | Small & Medium Business | Large Business | Government & Education | Support | Company & Press

World IPv6 Day and D-Link IPv6 Readiness

Sponsored by the Internet Society (ISOC), major web providers and other industry players will come together to enable IPv6 on their sites for 24 hours on June 8, 2011. D-Link will participate in the World IPv6 Day to discover and address any potential issue as well as raise awareness of the need for IPv6 readiness. The goal is to motivate organizations across the industry to prepare their services for IPv6 and ensure a successful transition.

Need Help Getting Ready?
If the transition to IPv6 seems like something that will impact your business, please visit contact D-Link at [888.331.8686](tel:888.331.8686) or getmore@dlink.com.

D-Link has been a designer and implementer of IPv6 since 2005 and has entered into a partnership with the "IPv6 Ready Phase II" certification and logo. D-Link is the first manufacturer of IPv6 ready routers.



D-Link is a member of the IPv6 Ready Logo Program – the IPv6 Ready logo.

PARTICIPATING WEBSITES

See below for other participating organisations

Show 10 entries Search:

Join Order	Participants	IPv6 Page	Participating Websites
151	0-day Clothing		www.zerodayclothing.com
152	North Carolina State University		www.ncsu.edu
153	CATNIX		www.catnix.com www.catnix.net
154	Georgian College of A. A. & T.		www.georgianc.on.ca
155	D-Link Systems		www.dlink.com
156	Louisiana State University		www.lsu.edu
157	Chameleon		www.chameleon.eu
158	Indiana University		www.indiana.edu www.iu.edu www.iub.edu

Service Provider | D-Link TV | Shop | Offers & Rebates

2006.6.6 6 Bone Decommissioned

DEVELOPMENT

D-Link IPv6 Development

- 2003/12 Receive the first IPv6 Ready Logo (Phase-1)
- 2006/5 Receive the first IPv6 Ready Logo (Phase-2)
- 2008/7 Ship the first IPv6 Ready CPE to the retail
- 2010/5 Participate Cablelabs' IPv6 Interop Event
- 2011/5 Participate and pass UNH-IOL IPv6 Interop Test Program
- 2011/5 Received the first IPv6 Ready Logo (DHCPv6 Server)
- 2006 – 2011 More than 23 consumer Router and AP devices are certified with IPv6 Ready Logo Phase-2



UNH-IOL IPv6 CE test Event



University of New Hampshire

InterOperability Laboratory

Improving networks worldwide.

Log In Home Site Map Contact Us

Google Search

Facebook Like

Services

Education

For Members

Press Room

About Us

Location: Home » Services » Testing » IPv6

CE Router Tested List

The routers listed below have demonstrated their commitment to support [World IPv6 Day - 8 June 2011](#) by performing IPv6 testing at the UNH-IOL. See below for test specification information.

This list contains information about CE Router Products that have performed the IPv6 Ready Logo CE Router Interoperability [Test Scenario](#) at the UNH-IOL.

CE Router Logo Information (Launch Date November 2011):

- Requires 100% pass for both Conformance and Interoperability Test Specifications
- Conformance Test Specification Status: Public Release July 2011
- Interoperability Test Scenario Status: Released as above

The following devices performed all the test cases successfully.

Company	Product	Product Version	Test Scenario Version	Date Listed
Broadcom	BCM 93380 WRG	5.5.5alpha0	1.0.0.b4	5/31/11
D-Link	DIR-652	v.1.5	1.0.0.b4	5/31/11

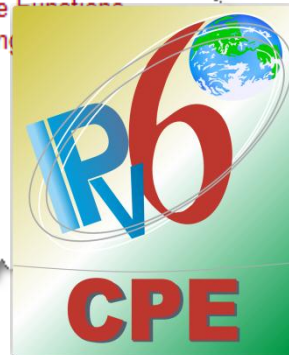


IPv6

- » [Contact Us](#)
- » [USGv6 Tested Devices](#)
- » [Consortium Charter](#)
- » [Join the IPv6 Consortium](#)
- » [FAQ](#)
- » [IPv6 News](#)
- » [Current Members](#)
- » [IPv6 Equipment](#)
- » [Calendar](#)
- » [Custom Test Tools](#)
- » [Knowledge Base](#)
- » [Logo Holders](#)

Related Technologies

- » [Bridge Functions](#)
- » [Routing](#)



D-Link[®]
Building Networks for People

D-Link Router IPv6 Support

➤ Tunneling

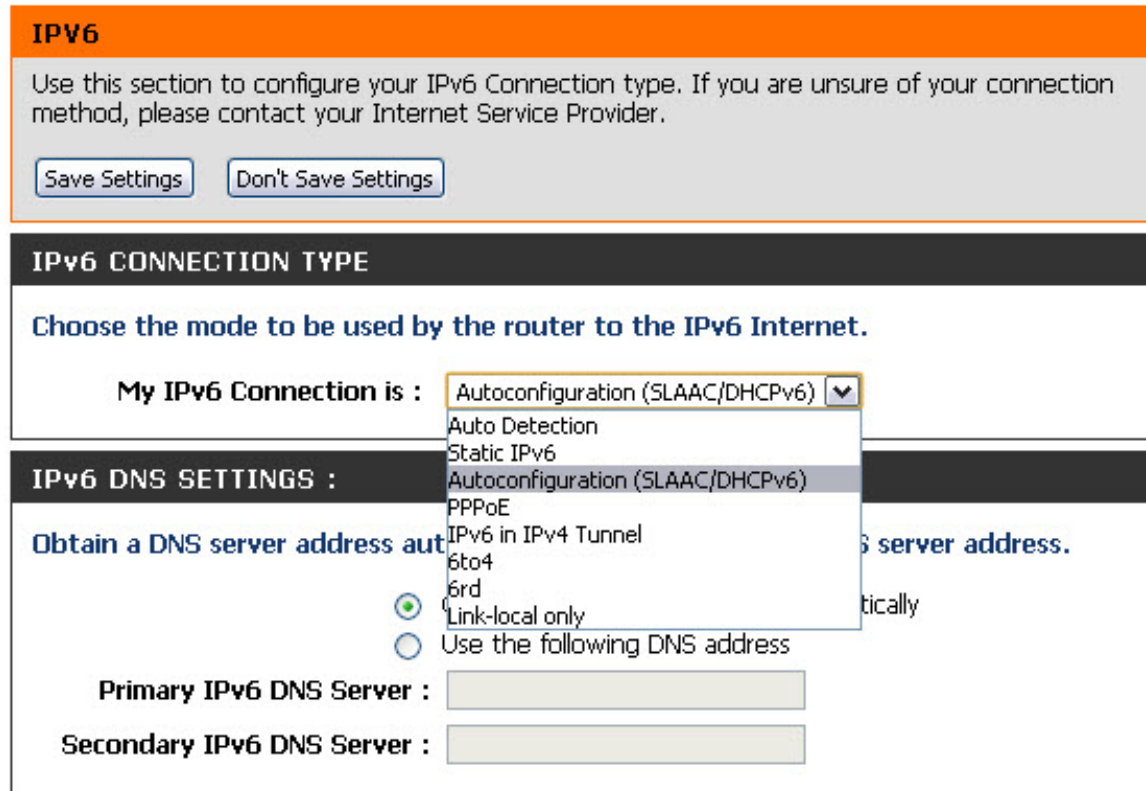
- IPv6 in IPv4 Tunneling
- 6to4 Tunneling
- 6rd Tunneling
 - DHCP Option for 6rd
- Teredo passthrough

➤ Native Dual Stack

- Static IPv6 and route
- DHCPv6 / DHCPv6-PD
- Autoconfiguration
- IPv6 over PPP

➤ DS-Lite (Dual-Stack Lite)

- DHCPv6 Option for DS-Lite



IPv6

Use this section to configure your IPv6 Connection type. If you are unsure of your connection method, please contact your Internet Service Provider.

IPv6 CONNECTION TYPE

Choose the mode to be used by the router to the IPv6 Internet.

My IPv6 Connection is : ▼

- Auto Detection
- Static IPv6
- Autoconfiguration (SLAAC/DHCPv6)
- PPPoE
- IPv6 in IPv4 Tunnel
- 6to4
- 6rd
- Link-local only
- Use the following DNS address

IPv6 DNS SETTINGS :

Obtain a DNS server address automatically Use the following DNS address

Primary IPv6 DNS Server :

Secondary IPv6 DNS Server :

D-Link Router IPv6 Support

- ➔ Web IPv6 Diagnostic Tool
- ➔ IPv6 Firewall
- ➔ IPv6 Static Route
- ➔ IPv6 RA Option for RDNS
- ➔ IPv6 RA Option for DNSSL
- ➔ IPv6 LLMNR and Bonjour
- ➔ DHCP-PD in LAN
- ➔ ULA Support
- ➔ IPv6 DDNS*
- ➔ TR-069/TR-181i2
- ➔ Simple Security
- ➔ IPv6 UPnP Support

IPV6 FIREWALL RULES

The Firewall settings section is an advance feature used to allow or deny traffic from passing through the device. It works in the same way as IP Filters with additional settings. You can create more detailed rules for the device.

IPV6 SIMPLE SECURITY

Enable IPv6 Simple Security:

IPV6 FIREWALL RULES

Configure IPv6 Firewall below:

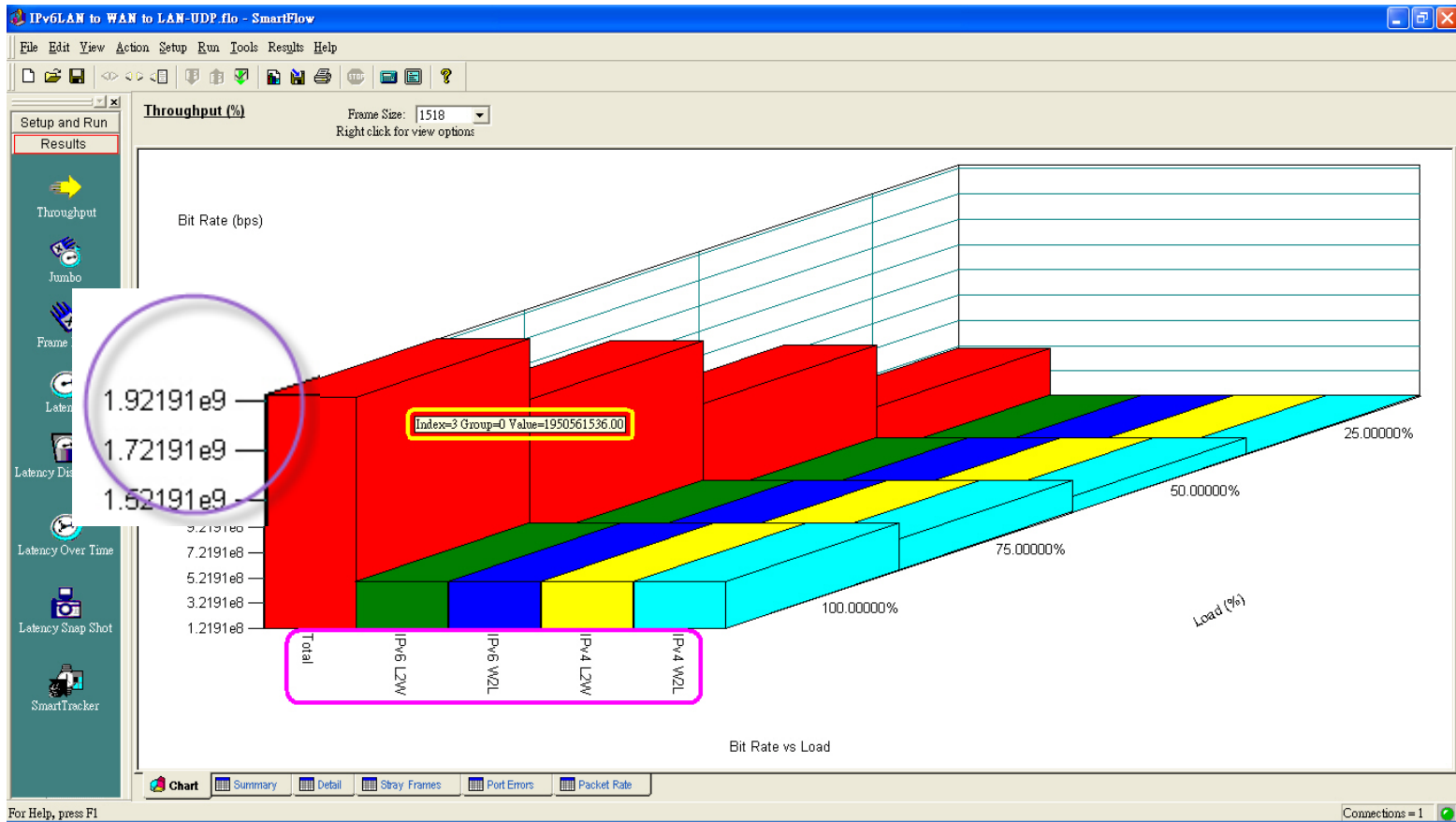
Turn IPv6 Firewall OFF

Remaining number of firewall rules that can be configured:

	Name	Schedule		
1.	<input type="text"/>	Always		
<input type="checkbox"/>	Source	Interface	IP Address Range	Protocol
	*	*	<input type="text"/>	TCP
	Dest	Interface	IP Address Range	Port Range
	*	*	<input type="text"/>	1 ~ 65535

D-Link True Gigabit Connectivity

- D-Link drives wire-speed IPv6 routing performance into homes.
- Up to 2Gbps IPv4 NAT/IPv6 Routing performance in selected models.



DEPLOYMENT

Promote IPv6 to Home Users

- D-Link drives IPv6 into retail markets and promotes IPv6 directly to home users.
- Most completed IPv6 support, in high-end models as well as entry-level models.
- More than **10,000,000** units of D-Link IPv6 ready routers have been sold.



IPv6 Field Deployments

➤ IPv6 is no longer an advanced research, it is for REAL!

➤ **CANADA**



DIR-825
*Xtreme N Dual Band
Gigabit Router*

➤ **USA**



DIR-825
*Xtreme N Dual Band
Gigabit Router*



DIR-655
*XTREME N
Gigabit Router*

➤ **GERMANY**



DIR-652
*Gigabit Home
Router*



DIR-615
Wireless N Router



IPv6 Certified Router

IPv6 Support:

- All new shipping router models will all be “IPv6 Ready Phase II” certified.

IPv6 Ready Logo Phase II Certified Models:

➤ Certified



DIR-300 B1
Wireless 150



DIR-600 A1
*Wireless N 150
Home Router*



DIR-601 A1
Wireless N 150



DIR-615 C1/C2
Wireless N Router



DIR-615 E1/E2/E3/E4
Wireless N Router



DIR-652 A1
*Gigabit Home
Router*



DIR-655 B1
*XTREME N
Gigabit Router*



DIR-825 B1
*Xtreme N Dual Band
Gigabit Router*

IPv6 Certified Router (Cont.)

IPv6 Ready Logo Phase II Certified Models:

➔ Certified



EBR-2310 C1
Ethernet Router



DIR-632 A1
*Wireless N
8-Port Router*



DIR-815 A1
*Wireless N
Dual Band Router*



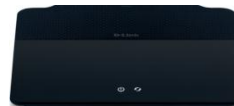
DIR-657
*HD Media
Router 1000*

➔ Certified



DIR-645
*Whole Home
Router 1000*

➔ Q3/2011



DIR-827
*HD Media
Router 2000*



DIR-835
N750 Router

IPv6 Ready Access Point

IPv6 Support:

- New AP models will all be “IPv6 Ready Phase II” certified.

IPv6 Ready AP Roadmap:

➤ Certified



➤ Certified



IPv6 Ready PowerLine

IPv6 Support:

- New wireless PowerLine models will all be “IPv6 Ready Phase II” certified.

IPv6 Ready PowerLine Roadmap:

➤ Certified



DHP-W306AV
PowerLine AV
Wireless N Extender



DHP-1320 A1
Wireless N
PowerLine Router

➤ Q3/2011



DHP-1565 A1
Wireless N
PowerLine
Gigabit Router

IPv6 Ready NAS

IPv6 Ready NAS Roadmap:

→ Q3/2011



DNS-345
4-Bay Network Storage
1.6 GHz CPU / 512MB RAM

→ Q4/2011



DNS-325
2-Bay Network Storage
1.2 GHz CPU / 256MB RAM



DNS-320
2-Bay Network Storage
800MHz CPU / 128MB RAM

IPv6 Ready IPCam

IPv6 Ready IPCam Roadmap:

→ Q3/2011



DCS-6111
MPEG4, MJPEG
VGA @ 30 fps
PoE, 3GPP, 3-axis, IR



DCS-7110
H.264, MPEG4, MJPEG
720P @ 30 fps
IR ,IP66 (Outdoor)



DCS-3715
H.264, MPEG4, MJPEG
1080P @ 30fps
SD slot

→ Q4/2011



DCS-6112
H.264, MPEG4, MJPEG
720P @ 30fps
PoE, 3-axis, MicroSD slot



DCS-6113
H.264, MPEG4, MJPEG
720P @ 30fps
PoE, 3-axis, MicroSD slot, IR

Q&A

Contáctenos

Hans, M.H. Liu

Wireless & Router Product Division
D-Link Corporation
Tel. +886-2-6600-0123 ext. 5836
Hans_Liu@dlink.com.tw

Claire, H.J. Cheng

Wireless & Router Product Division
D-Link Corporation
Tel. +886-2-6600-0123 ext. 5829
Claire_Cheng@dlink.com.tw

Safe Harbor Statement

The following is intended to outline our general product direction. It is intended for information purposes only, and may not be incorporated into any contract. It is not a commitment to deliver any material, code, or functionality, and should not be relied upon in making purchasing decisions. The development, release, and timing of features or functionality described for D-Link products remains at the sole discretion of D-Link.

Unpublished Work of D-Link Corp. All Rights Reserved.

This work is an unpublished work and contains confidential, proprietary, and trade secret information of D-Link Corp. Access to this work is restricted to D-Link employees who have a need to know to perform tasks within the scope of their assignments. No part of this work may be practiced, performed, copied, distributed, revised, modified, translated, abridged, condensed, expanded, collected, or adapted without the prior written consent of D-Link Corp. Any use or exploitation of this work without authorization could subject the perpetrator to criminal and civil liability.

General Disclaimer

This document is not to be construed as a promise by any participating company to develop, deliver, or market a product. D-Link Corp., makes no representations or warranties with respect to the contents of this document, and specifically disclaims any express or implied warranties of merchantability or fitness for any particular purpose. Further, D-Link Corp., reserves the right to revise this document and to make changes to its content, at any time, without obligation to notify any person or entity of such revisions or changes. All D-Link marks referenced in this presentation are trademarks or registered trademarks of D-Link Corp. in the Taiwan and other countries. All third-party trademarks and images are the property of their respective owners.