

RIPE NCC Update

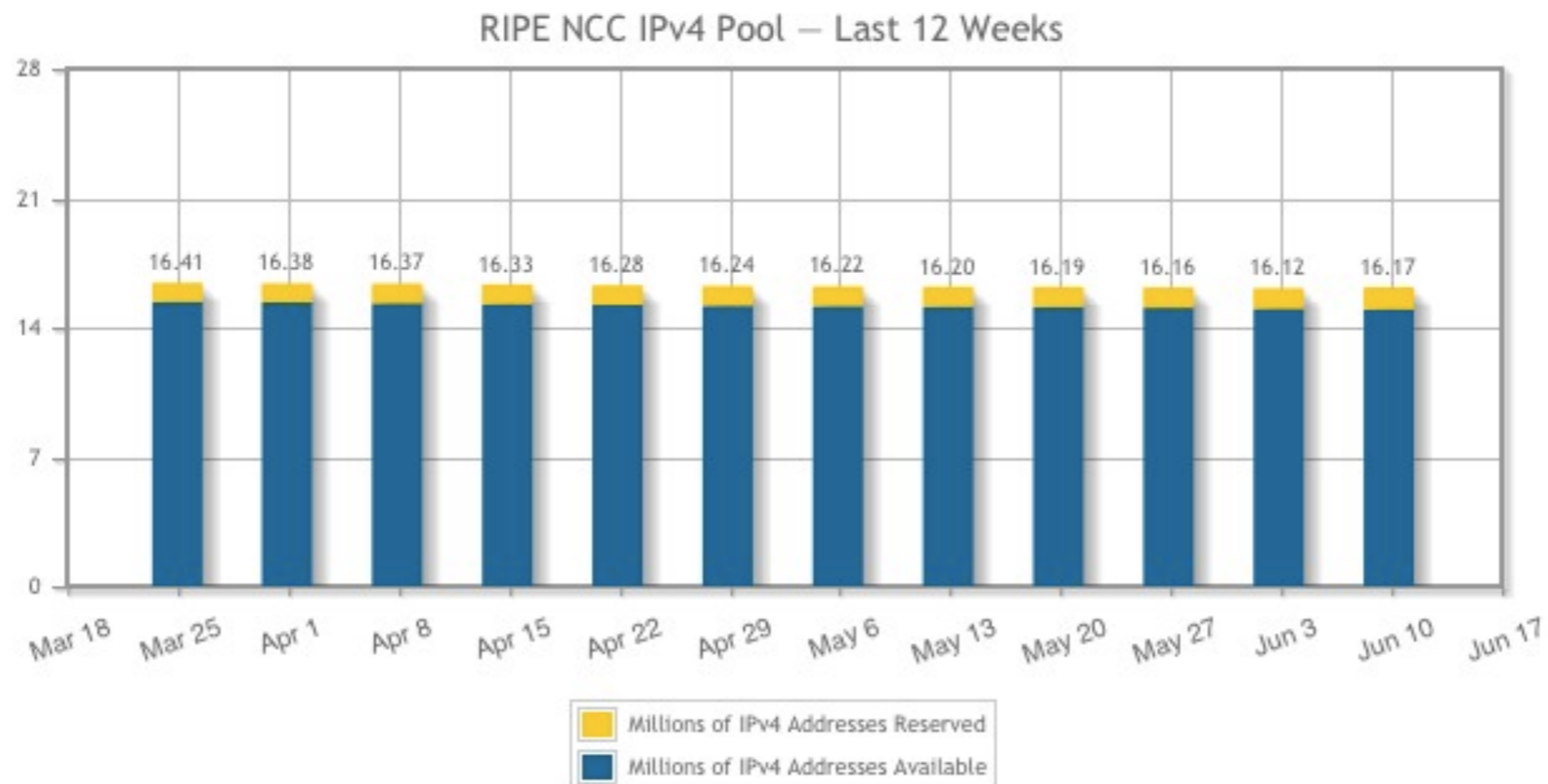
APNIC 36

Ingrid Wijte
RIPE NCC

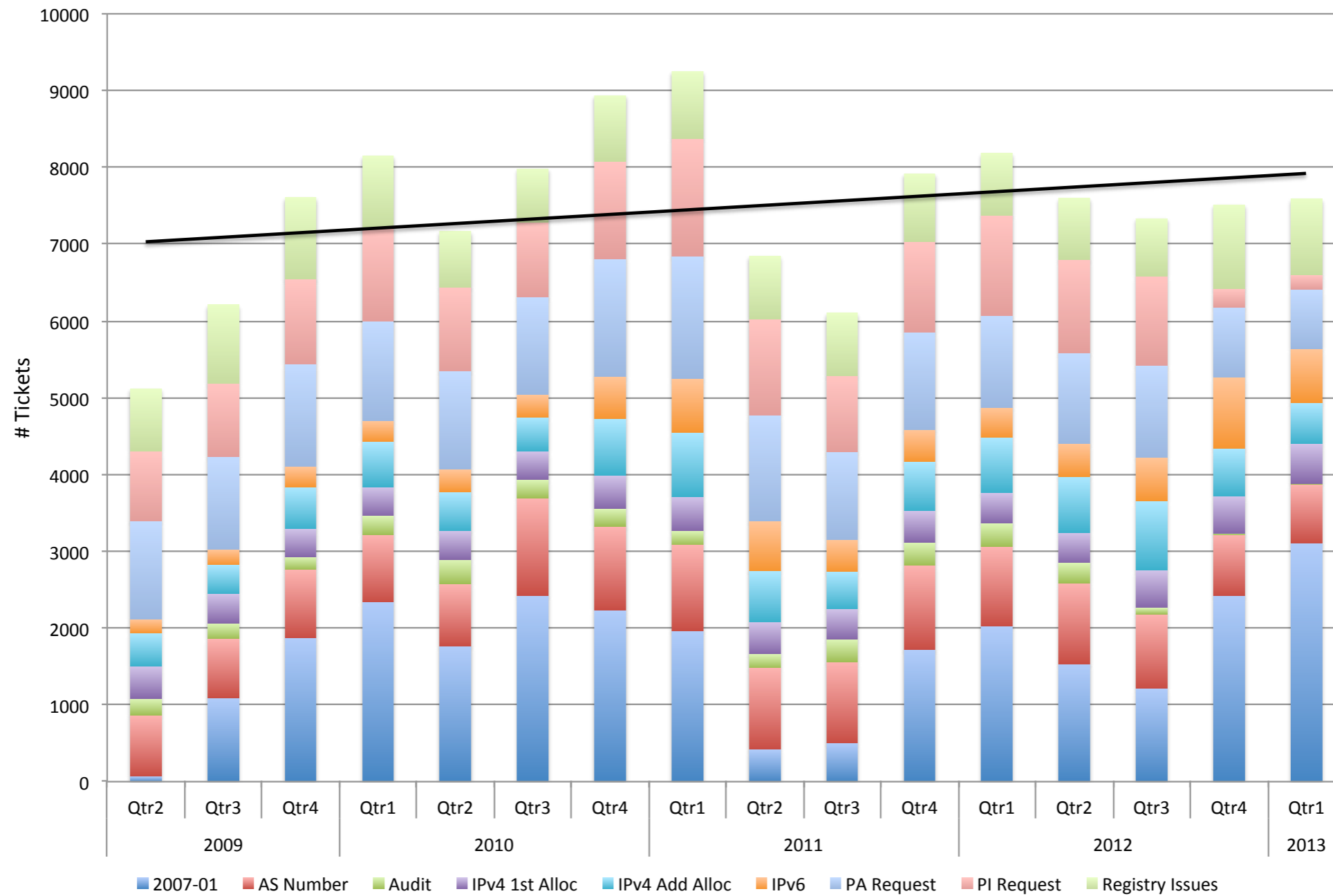


IPv4 Status

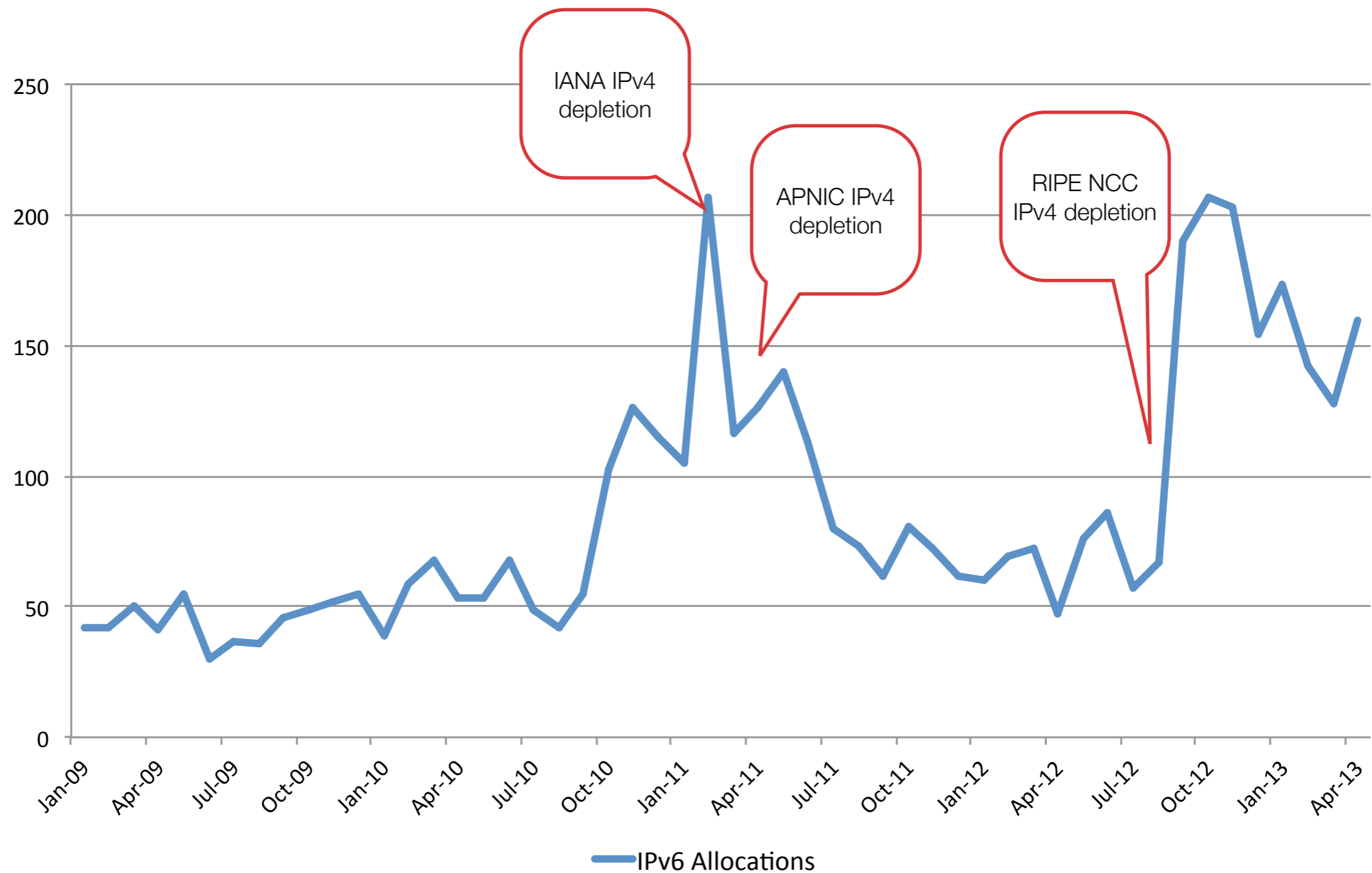
- IPv4 depletion event: 14 September 2012
 - Orderly run-out
- 2044 /22s issued so far from last /8



Registration Services ticket volume



IPv6 Allocation

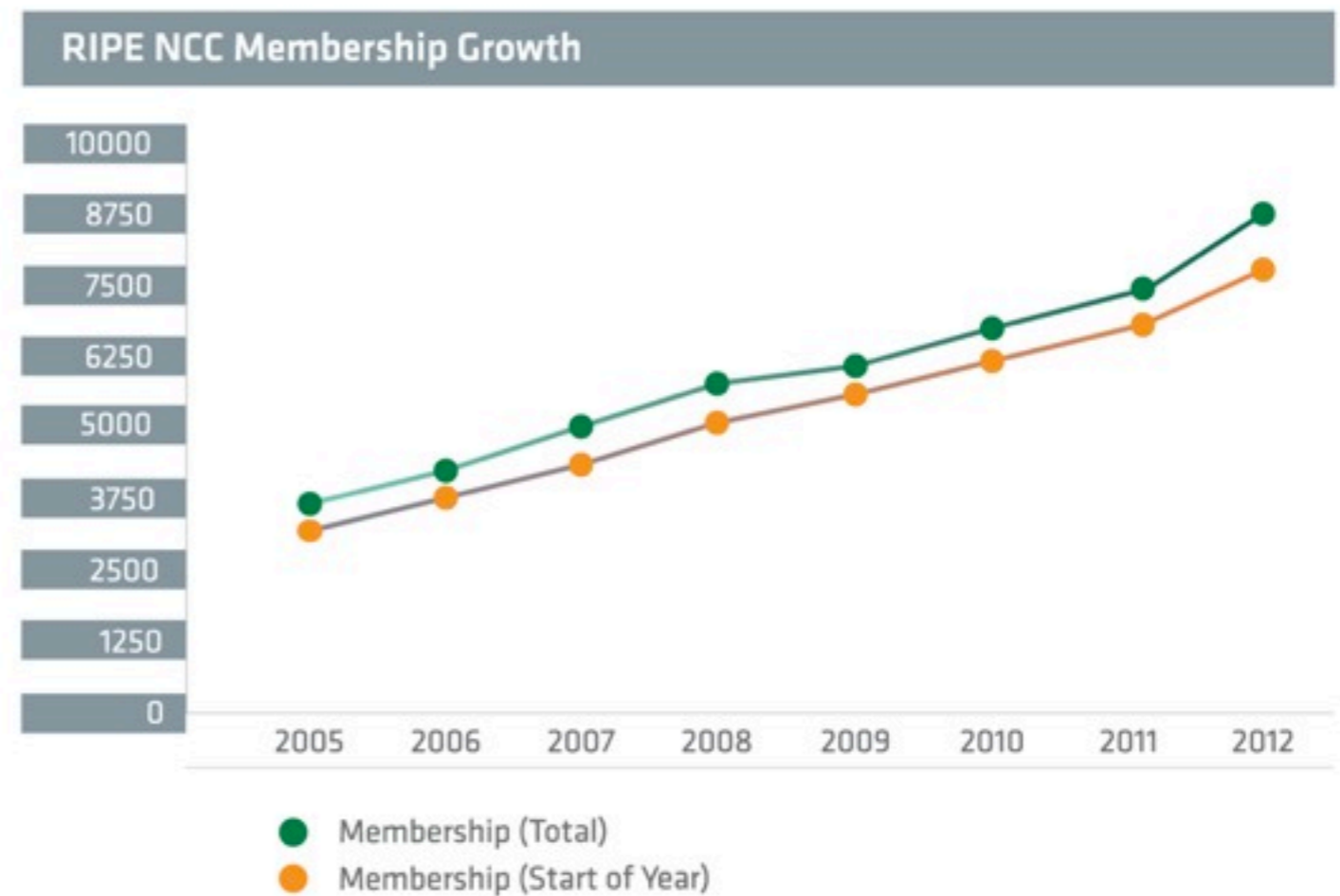


Assisted Registry Check

- The existing Audit procedure is seen as ‘cumbersome’ and time consuming for the LIR
- In order to maintain a strong registry and align with the members feedback, we are evolving our services
- Assisted Registry Check
 - Maintain the periodic contact moments between LIRs and the RIPE NCC
 - Reduce workload for LIRs
 - RIPE NCC provides a report highlighting our observations and recommendations
 - Overview of registered information (e.g. contact details)
 - Overview of Internet Number Resource consistency (e.g. overlapping assignments)
 - Overview of rDNS and route-objects consistency (e.g. check lame reverse delegations and routing registry vs BGP announcements)
 - Assist LIRs with improving the data accuracy

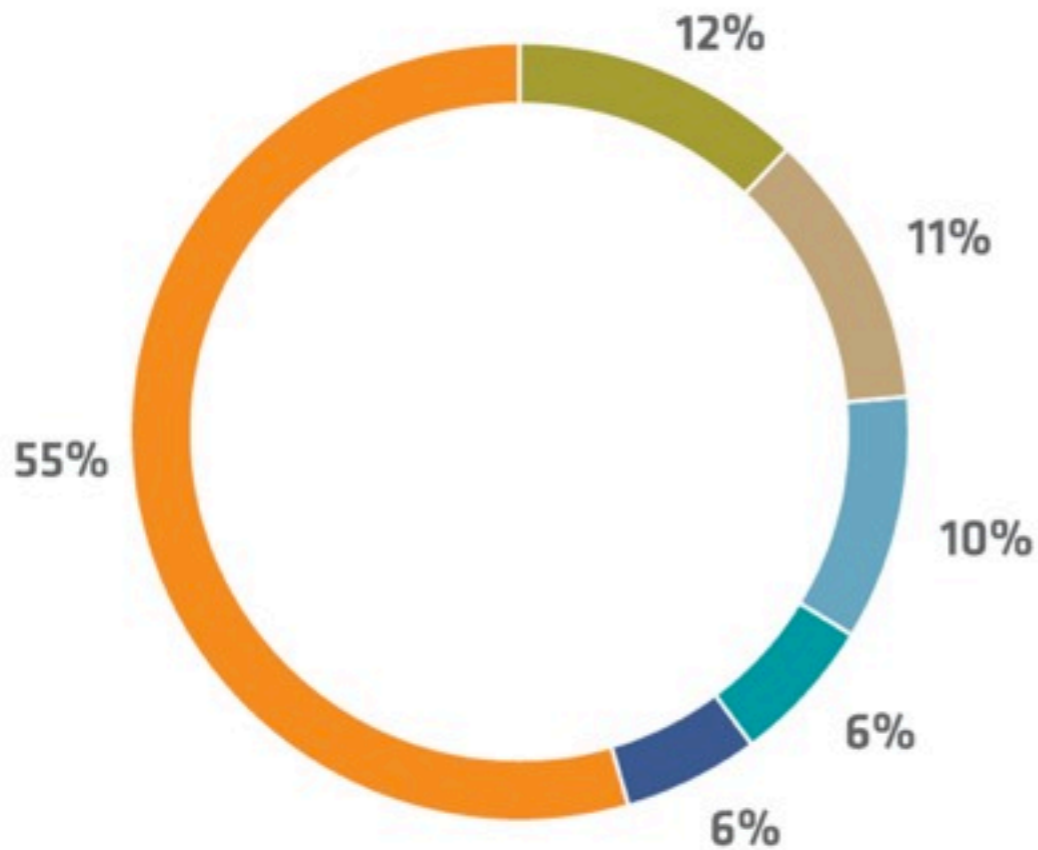
9,200 RIPE NCC Members from 76 Countries

- Steady growth
- Increased diversity
- All members must feel included
- Preserve open bottom-up, self-regulation
- Promote the RIPE Policy Development Process
- Challenge: keeping all members engaged with PDP



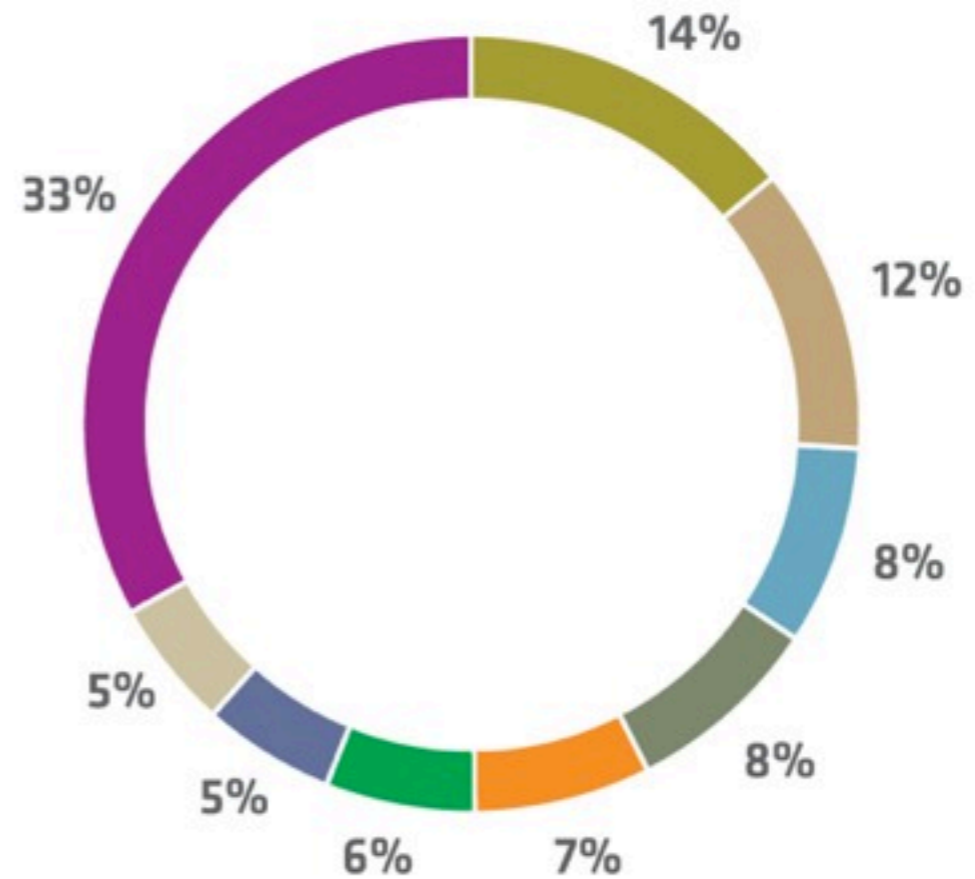
RIPE NCC Membership 2012

Total Membership by Country



- Russia
- UK
- Germany
- Italy
- France
- Other

New Membership by Country



- UK
- Germany
- France
- Netherlands
- Russia
- Spain
- Italy
- Switzerland
- Other

Adapting to Members' Needs

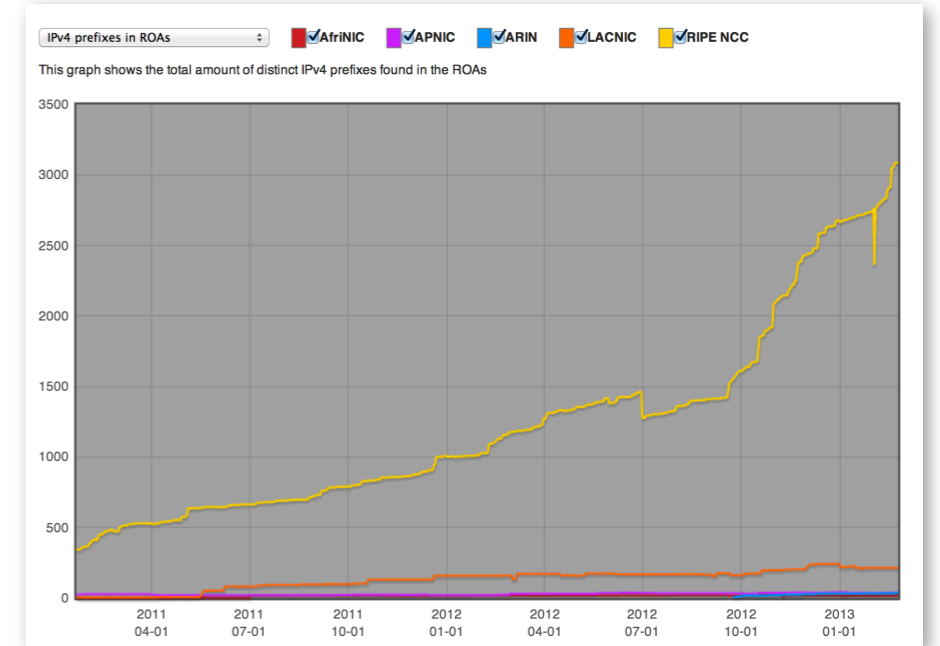
- A range of new players
 - Who may have less time to interact with the RIPE NCC
- Evolving industry landscape
 - Increased membership engagement is necessary to understand these evolving needs
- We are adapting our services
 - New ways of communicating and interacting with our membership

Regional Outreach

- Membership growth and diversification
- We must engage with our **entire** membership across our service region
- Differing needs and issues, different stages of development across regions
- Developing our strategy to meet these needs
 - Increased regional presence

RPKI

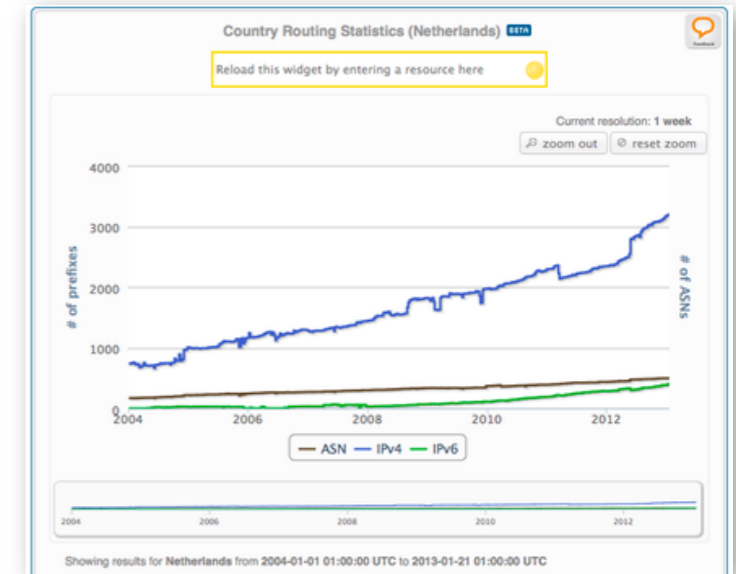
- Continued development
- ... and deployment
- “Webinar” online at...
<http://meet95212513.adobeconnect.com/p6jrgwe2qw4/>
- Policy issues
 - Legacy address certification
 - Provider independent certification



RIPE Labs – Recent Highlights

- Statistics per Country

<https://labs.ripe.net/Members/cteusche/country-specific-graphs-in-ripestat>



- RIPE Atlas Update

https://labs.ripe.net/Members/suzanne_taylor_muzzin/ripe-atlas-april-2013-update

- RIPE NCC Roadmap

<https://labs.ripe.net/Members/mirjam/introducing-ripe-ncc-roadmap>



More services being implemented

- IP Analyser
 - Supporting members' address admin
- RIPE Stat
 - Number resource info aggregated from many sources
 - Try it... <https://stat.ripe.net/193.0.6.139>
- Database Software rewritten
- RIPE Atlas new probes & anchor pilot
- Membership Survey, results to be analysed but looks very positive

The Year to Come

- Increased registry accuracy
- Measurements
- Internet Governance
- Regional outreach / presence
- Replacing and improving internal systems
- Increase transparency / engagement for all of our activities and services

Questions?

